

112  
I find that I have  
13 dried at the cottage, the flowers left  
I think the 2nd dried at the cottage  
the 3rd house - poor child at school, the  
I have even been a few times while the  
I have been at school of the school in an  
uncertainty of the weather  
I have dried with water in the  
the children hanging at the school, little  
a piece of a finger -  
My friend  
C. M. M. M. M.  
I have been at school at the school, little  
a piece of a finger -

# Mary Rose

A film by J.M Barrie

*Major Project*

India de Wit







# Summary



Mary Rose has a supernatural connection to a small island in the Outer Hebrides. At age 10 she disappeared for a week and returns without any knowledge of her vanishing. Years later she revisits the island and vanishes again, this time for 13 years. As time passes everyone has mourned the loss of Mary Rose. Until, the day she unexpectedly reappears on the island's shores, unaware that she even left at all.

# Rationale

- Text set over multiple decades
- Opportunities for symbolism through costume
- Story pulls on heartstrings
- Grounded in reality but, with elements of “another world”
- Pushing my sewing abilities further by sewing with hard to handle fabrics.



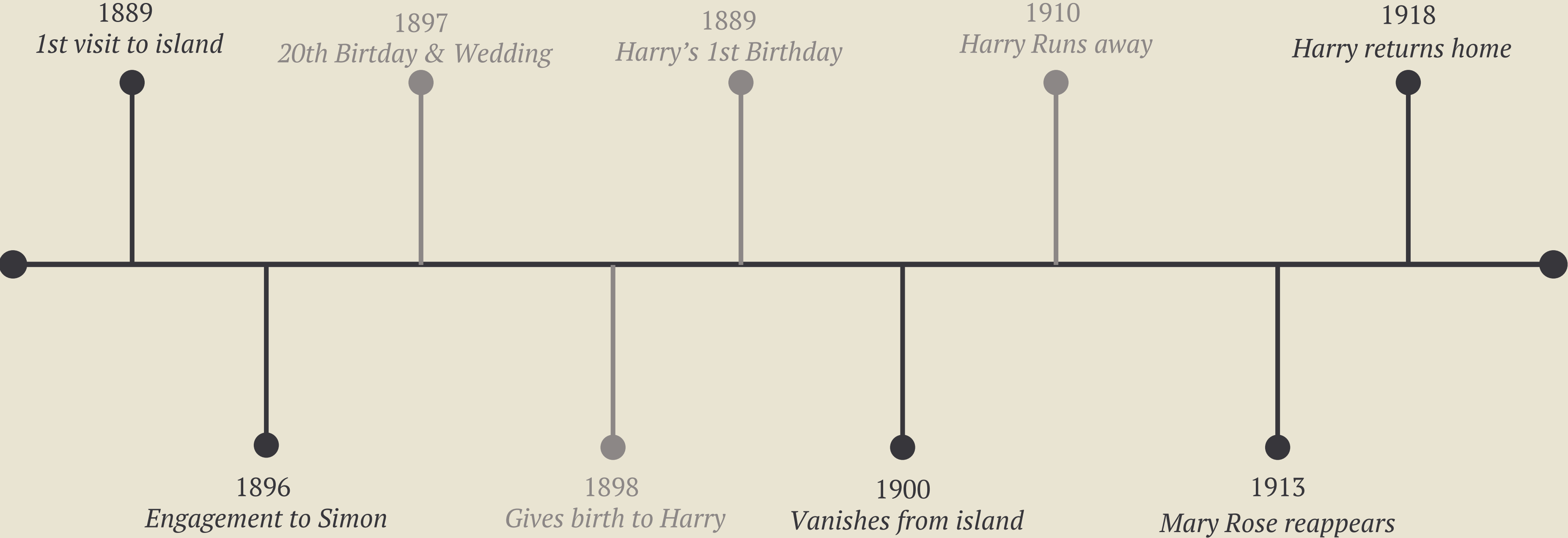
# Hitchcock

and the film that never came to be



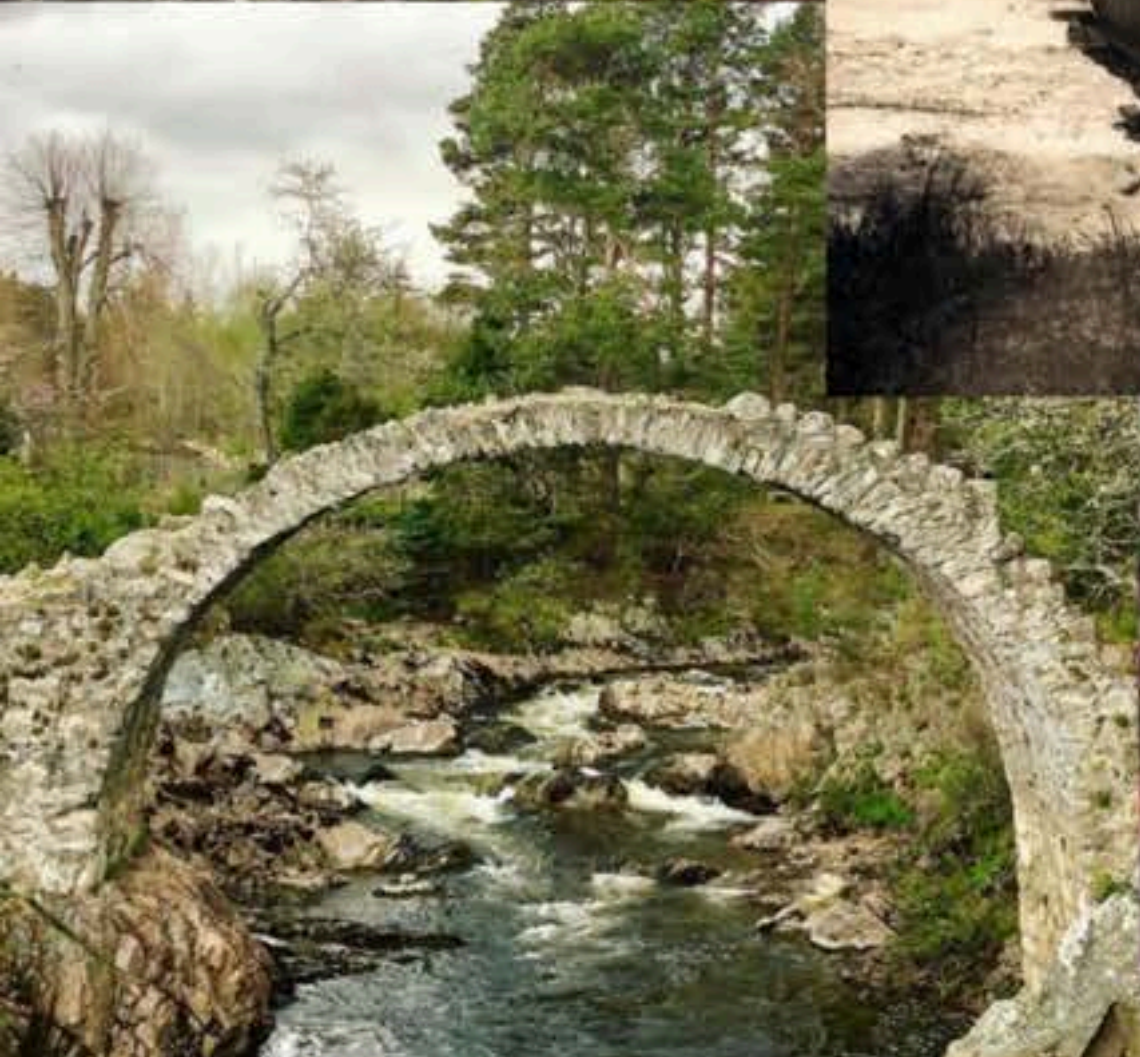
Scenes from Barrie's play  
Scenes from proposed screenplay

# Timeline



# Locations







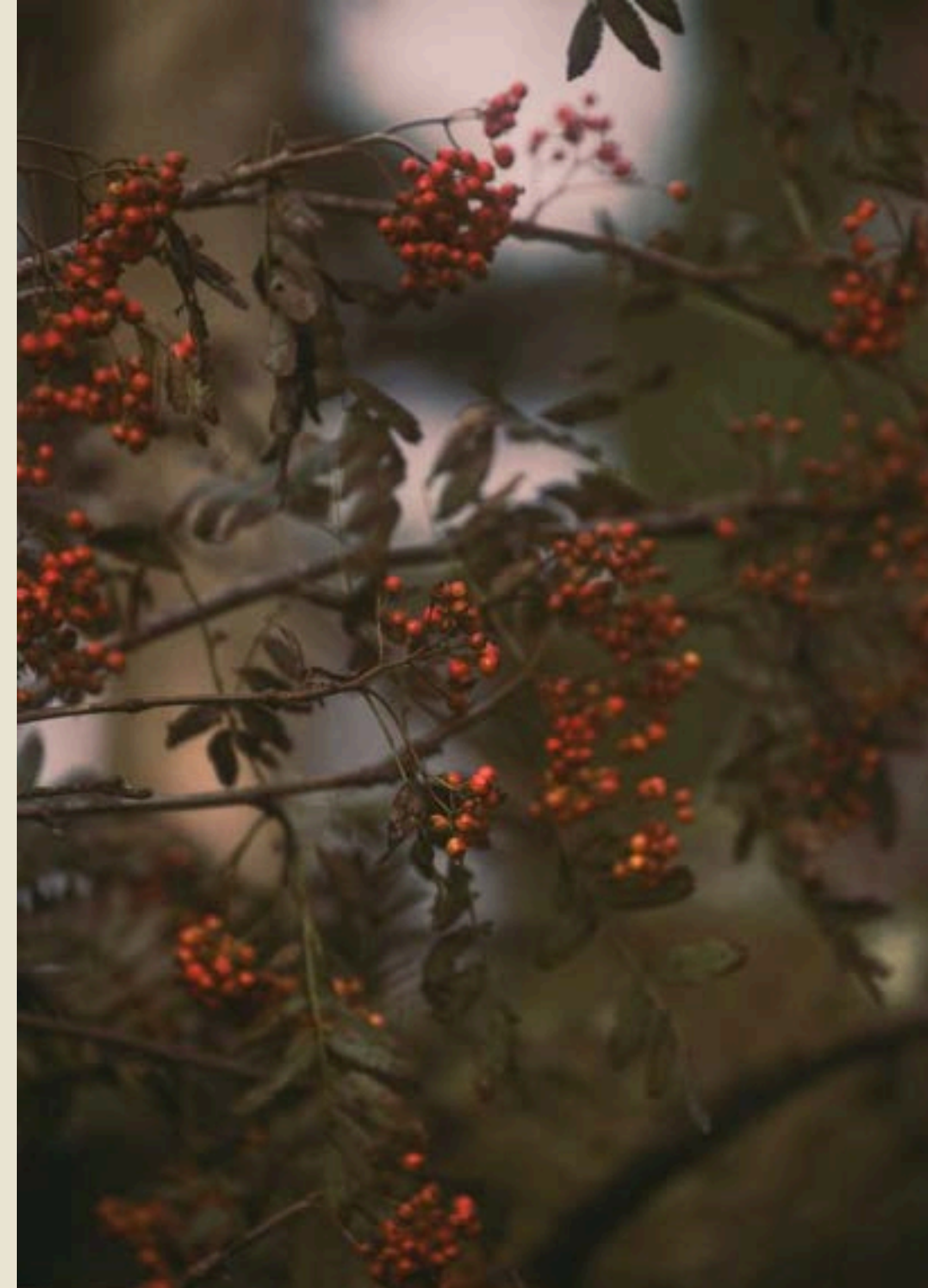




# Folkloric Influences



Apple tree: state of innocence youth  
and the transitionary nature of time  
Life continuing after death in winter



Rowan tree a.k.a. fairy tree:  
protection against the evil spirit  
chopping rowan tree brings bad luck



Designs



# Mary Rose

“An elusiveness of which she is unaware”





# Mary Rose

Pastels ,frills and florals





1889



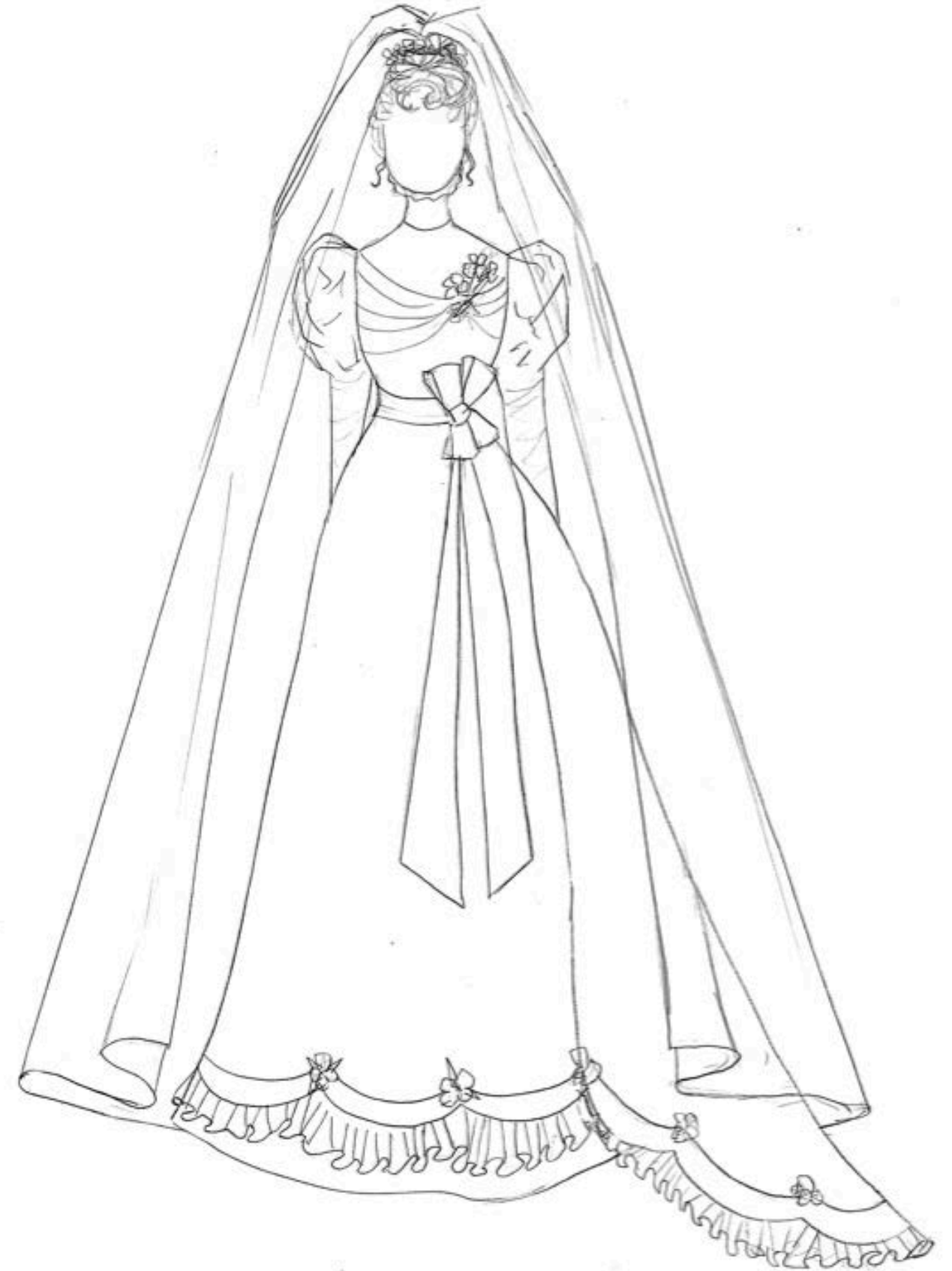


1896





# 1897



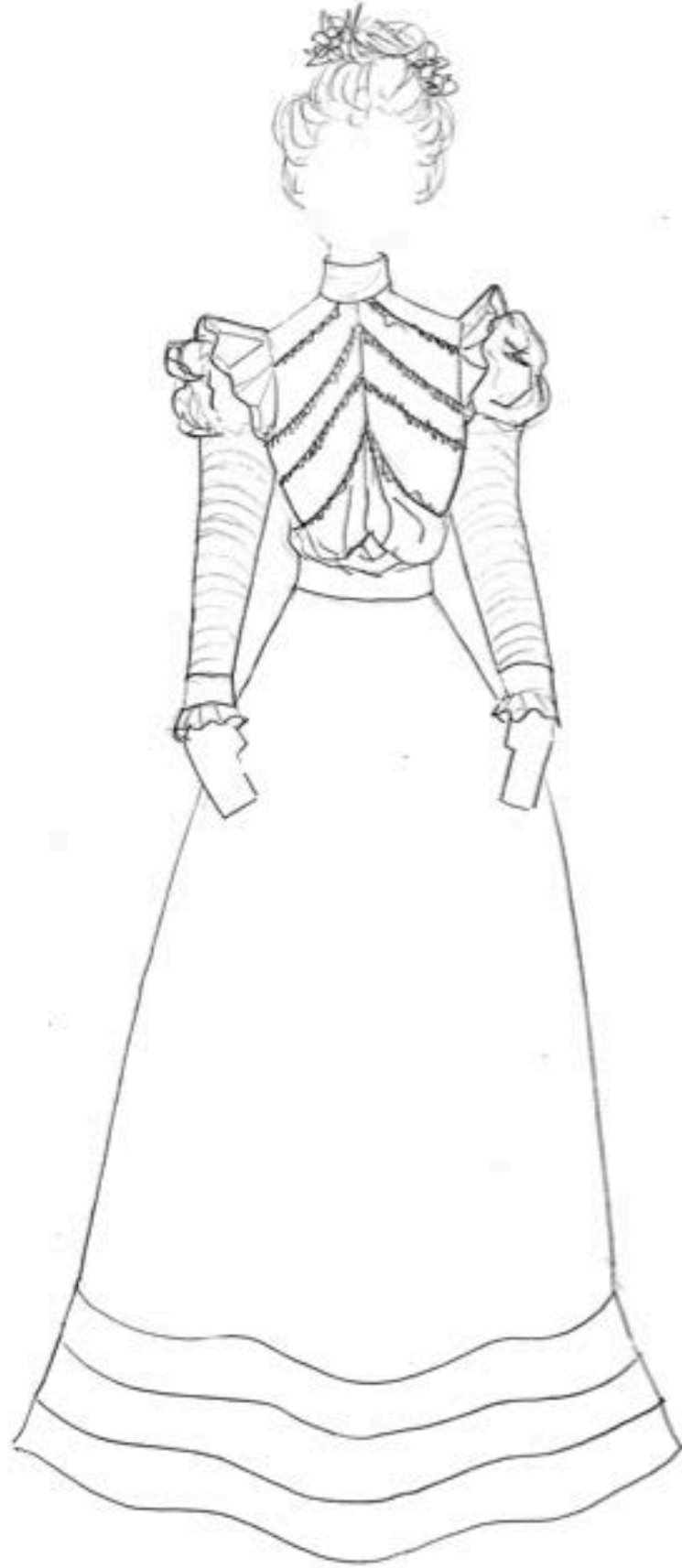


# 1898



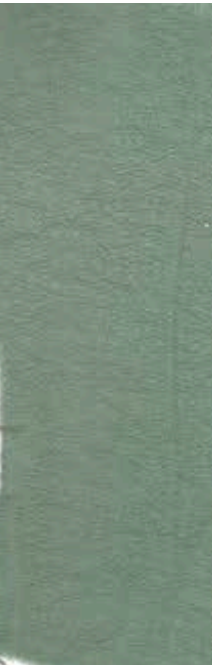


1899 & 1900





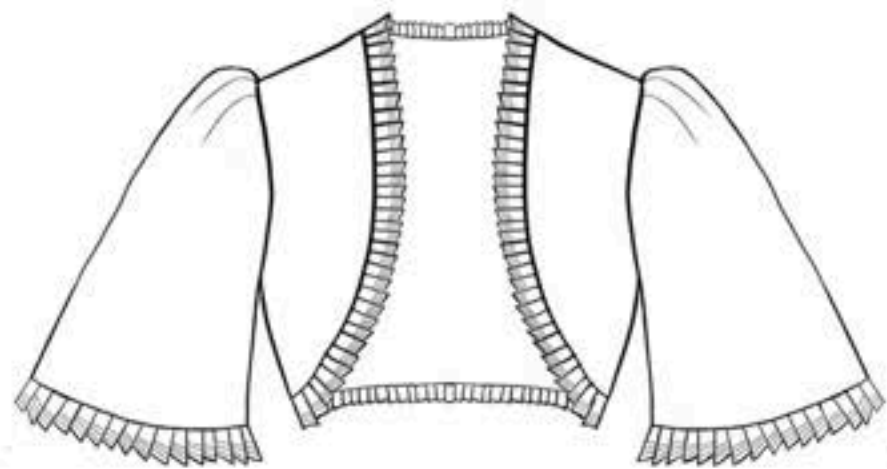
# 1900



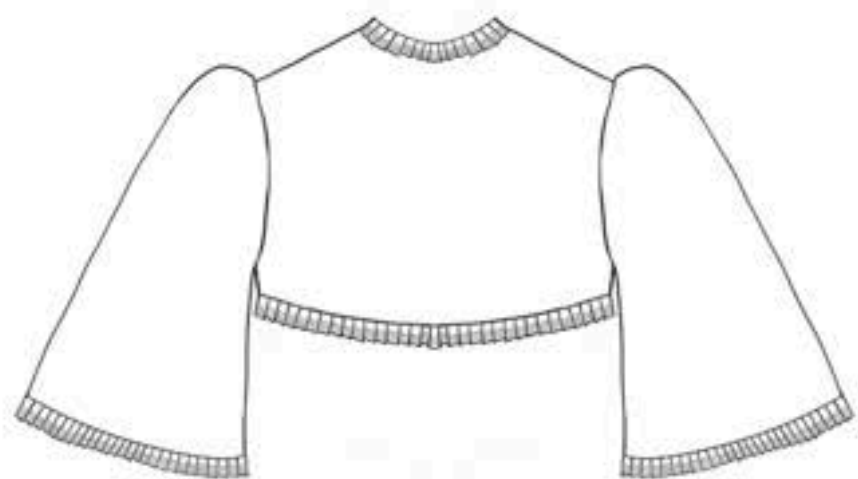














1913



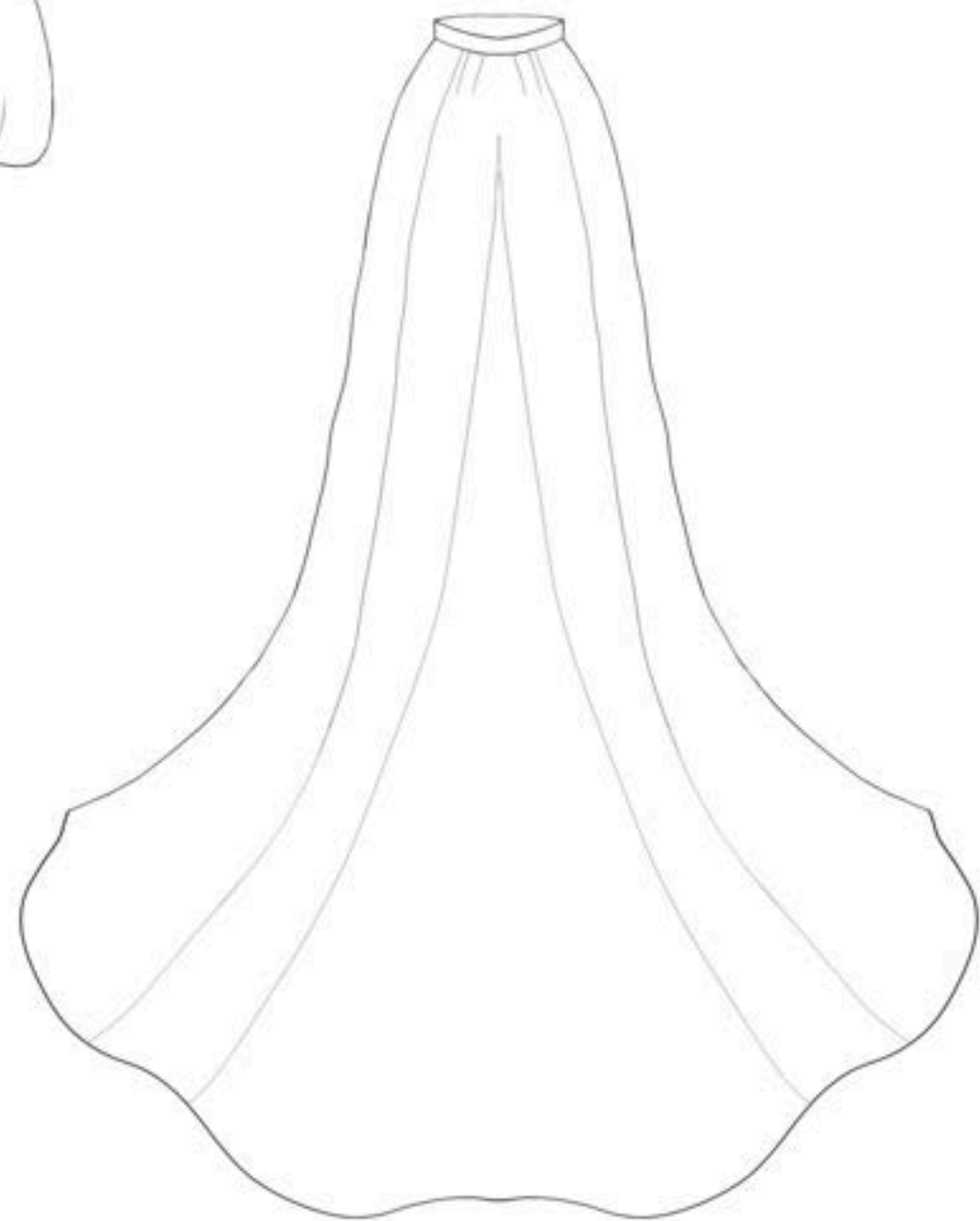
























# Mrs. Morland

Mary Rose's Mother



Jewel tones  
Rich Fabrics  
Lace and trims



“Leads the house without knowing  
her true influence”





1896





# 1907

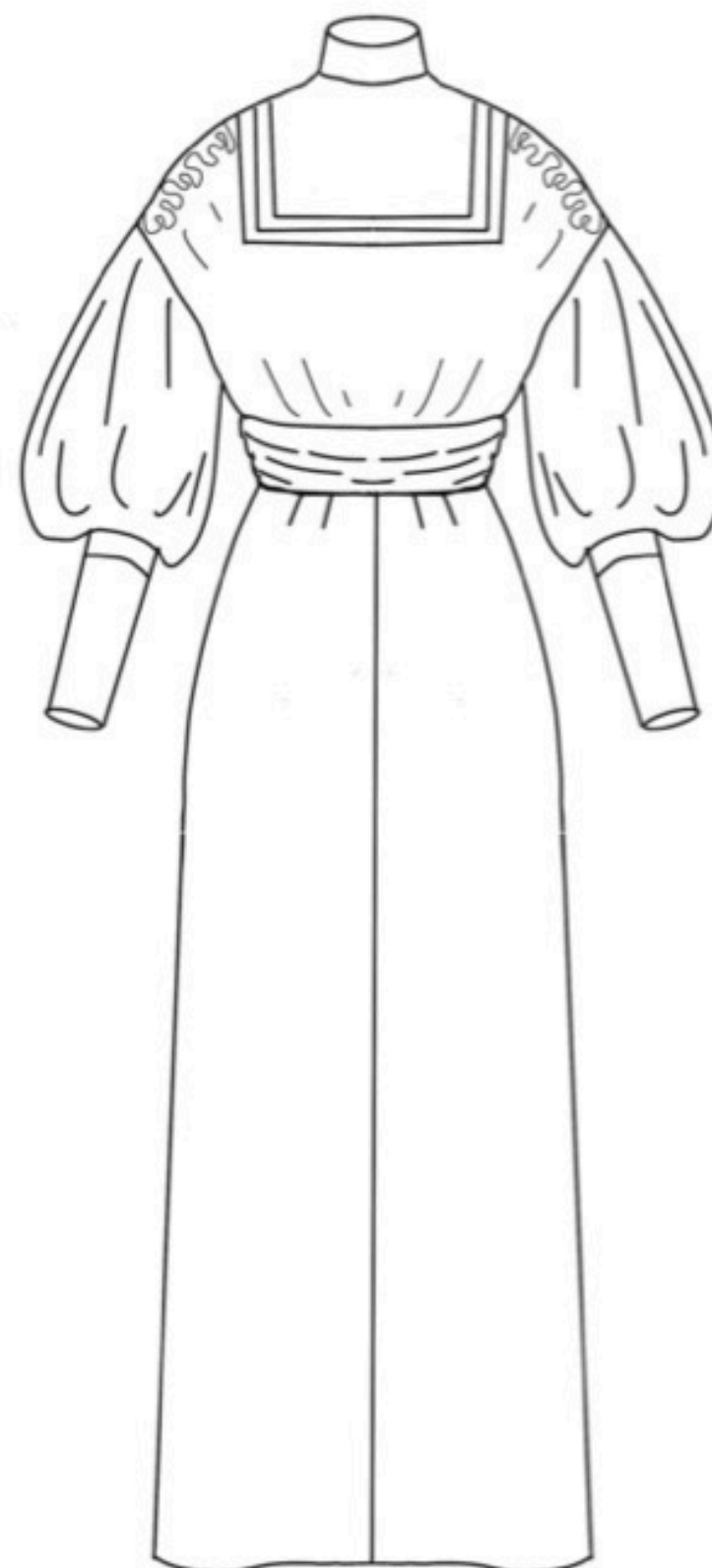
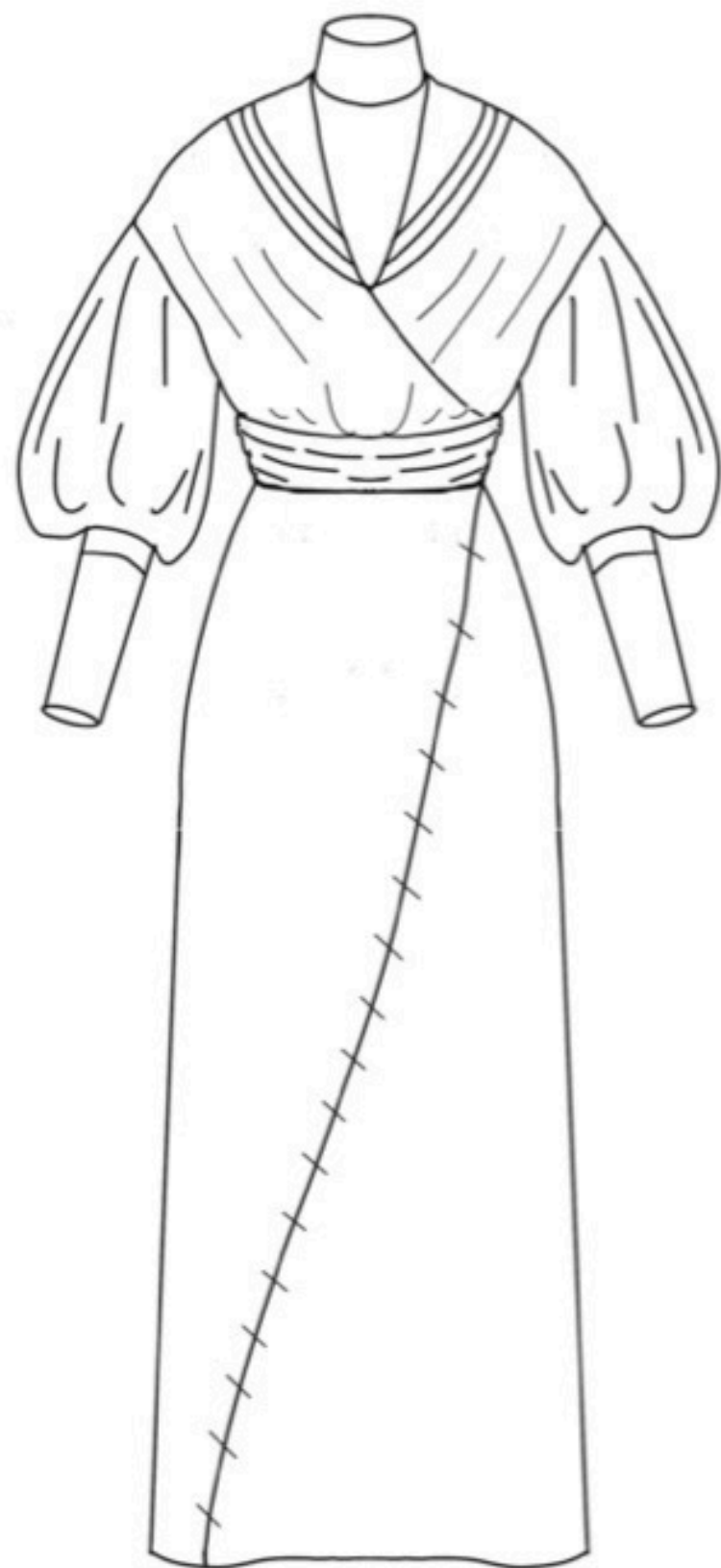




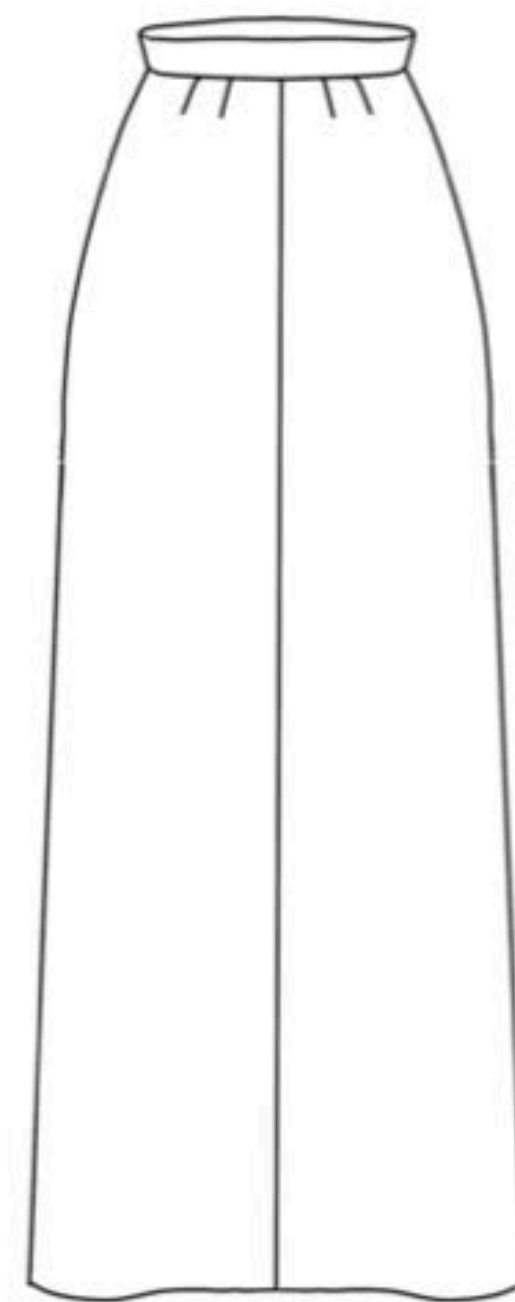
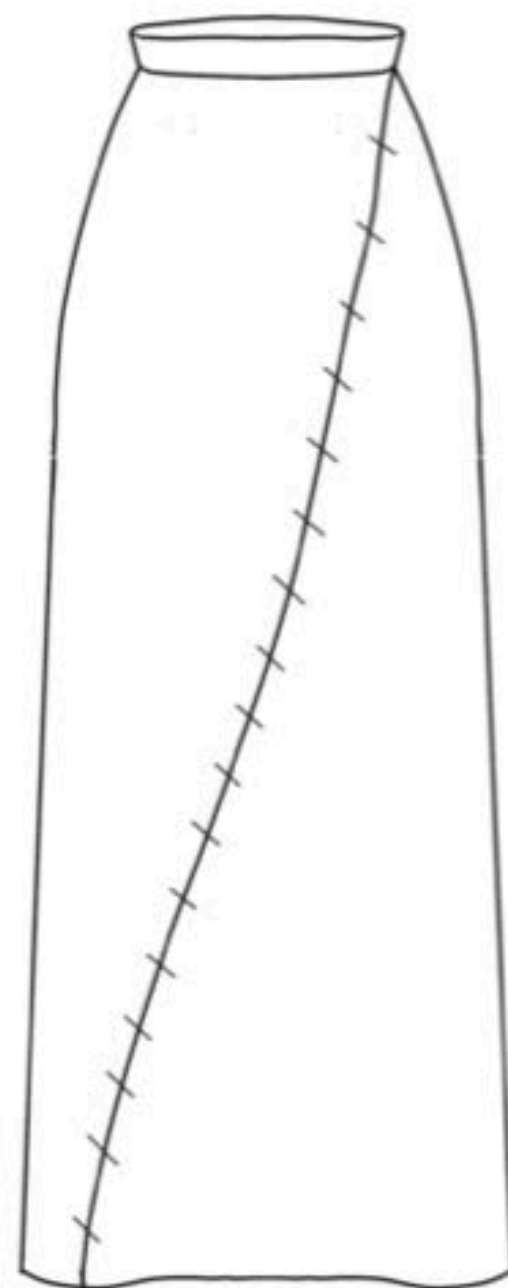
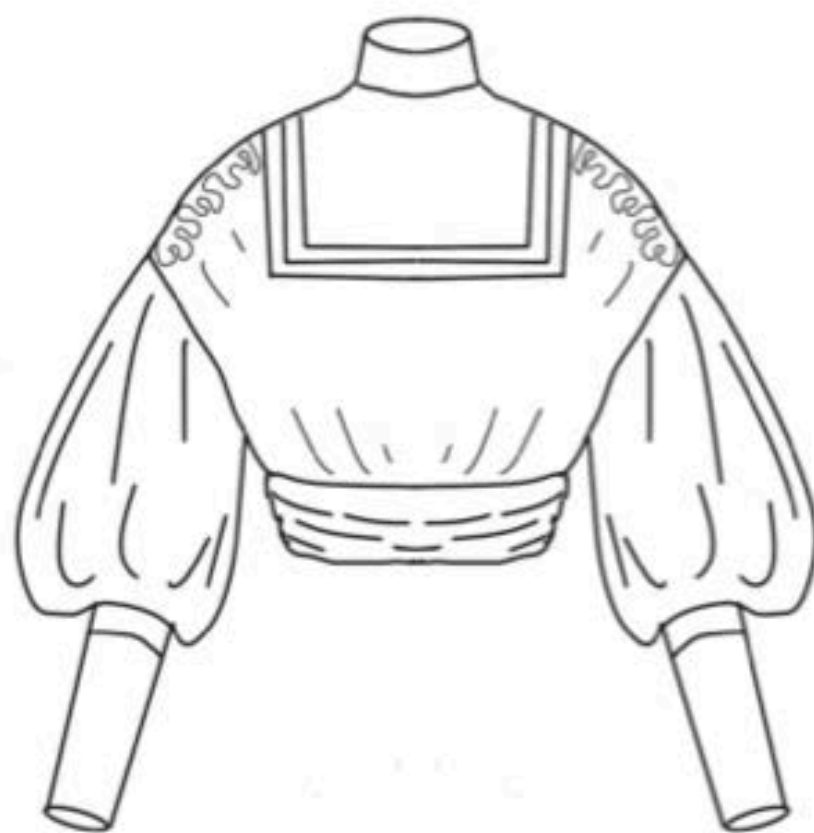
1913













# Simon Blake

Mary Rose's Husband



“Manly youth, was rather larky but  
‘inner man is coming out’”

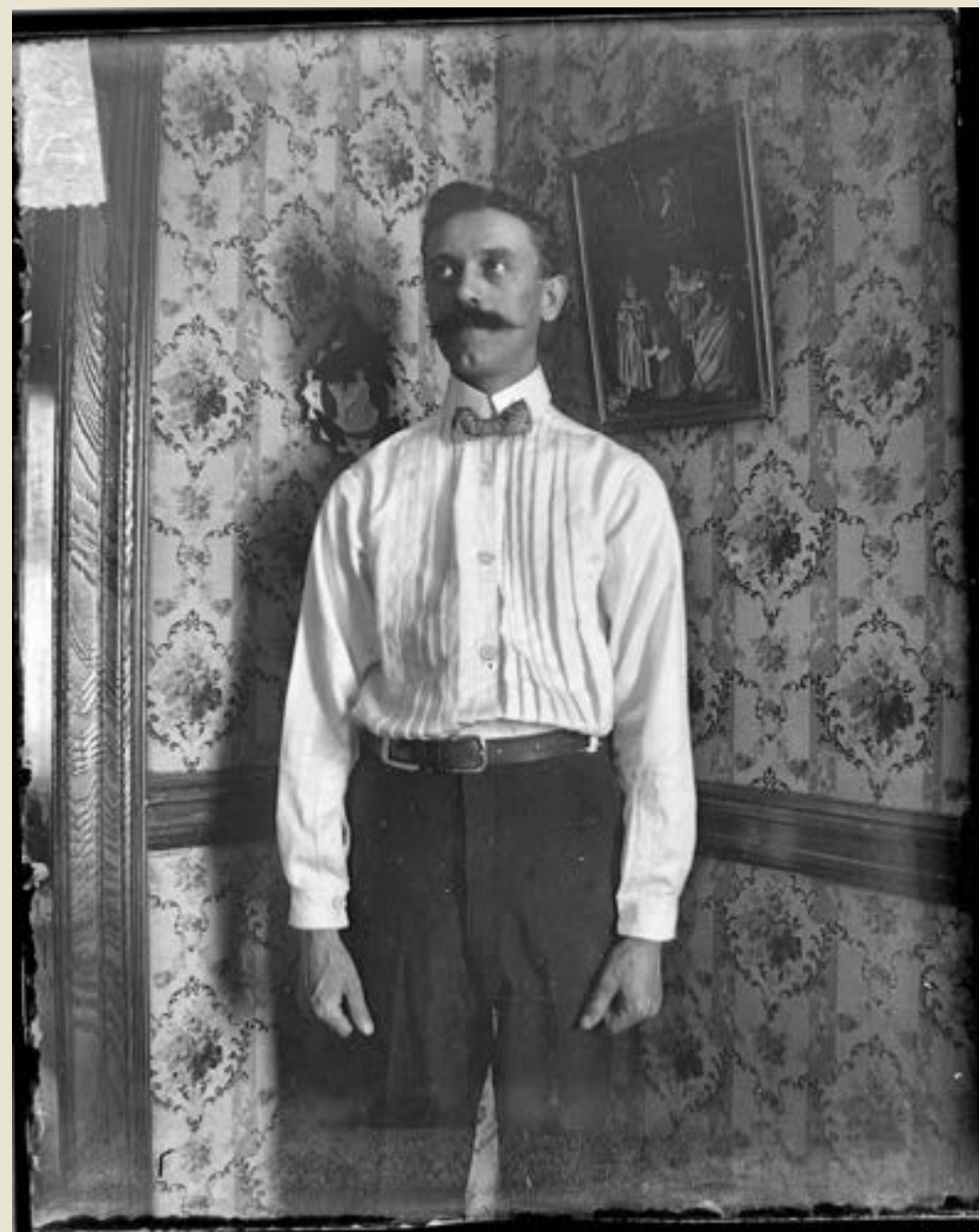




Copyright. C. 1932-1946.  
Entered at Stationers' Hall.

# **London Art Fashions.** **SUMMER OVERCOAT.**

The John Williamson Company Limited, 11 & 12, D'Arny Lane, London, W.C.





1897 & 1898





1896





1899





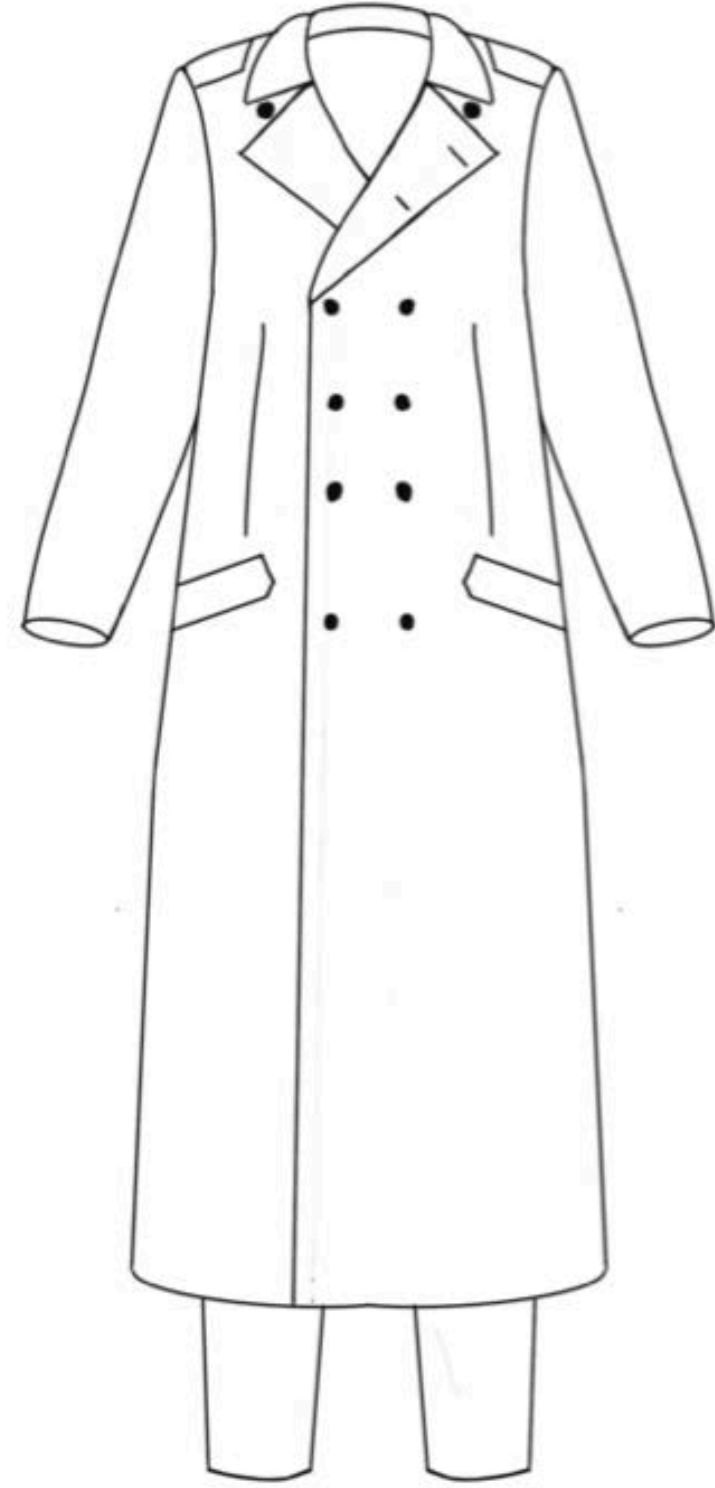
# 1900

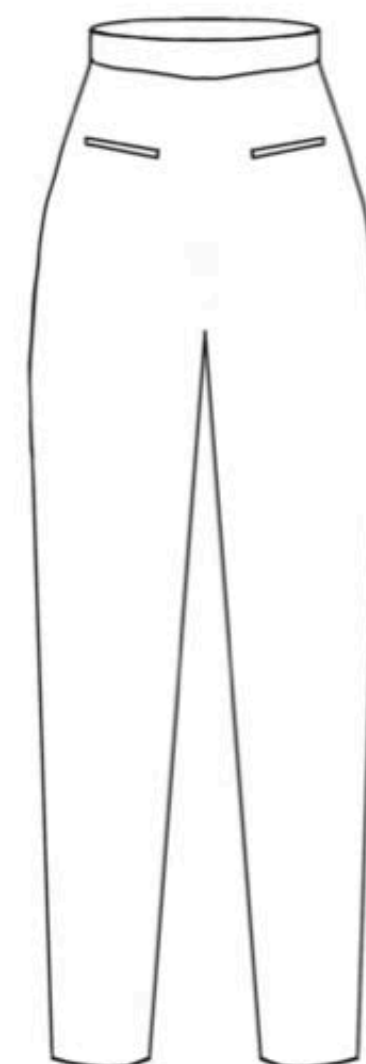
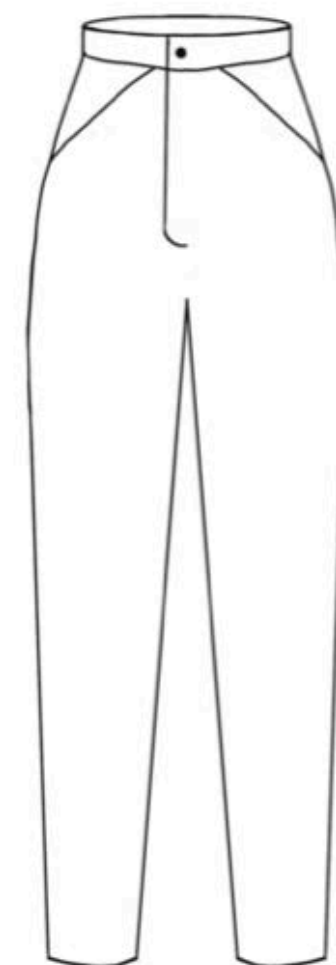
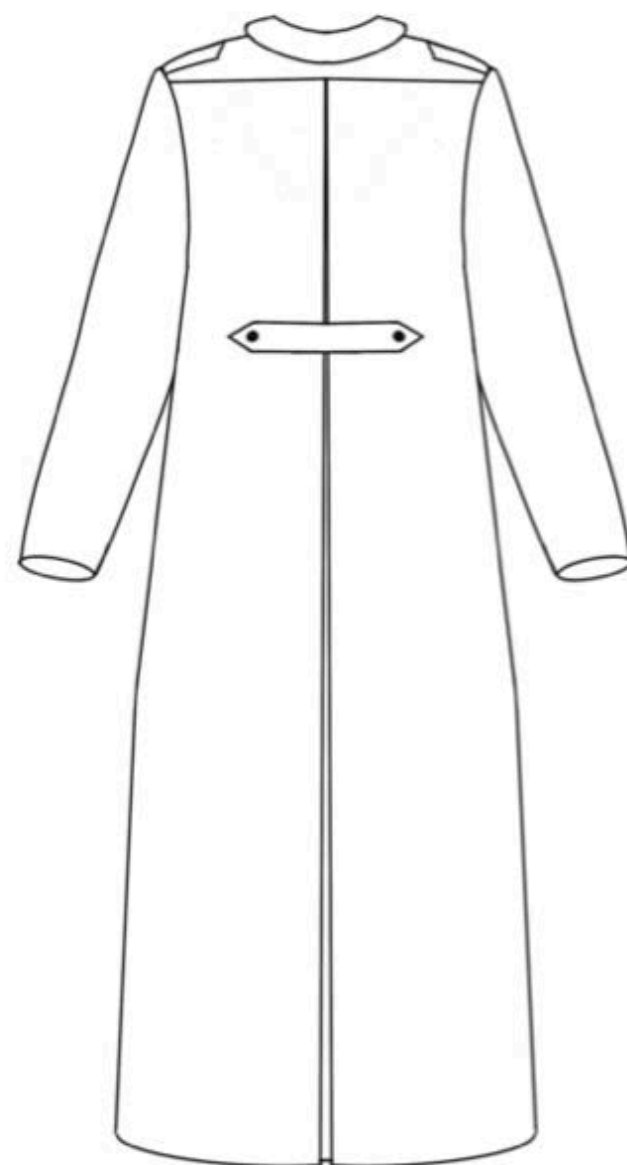
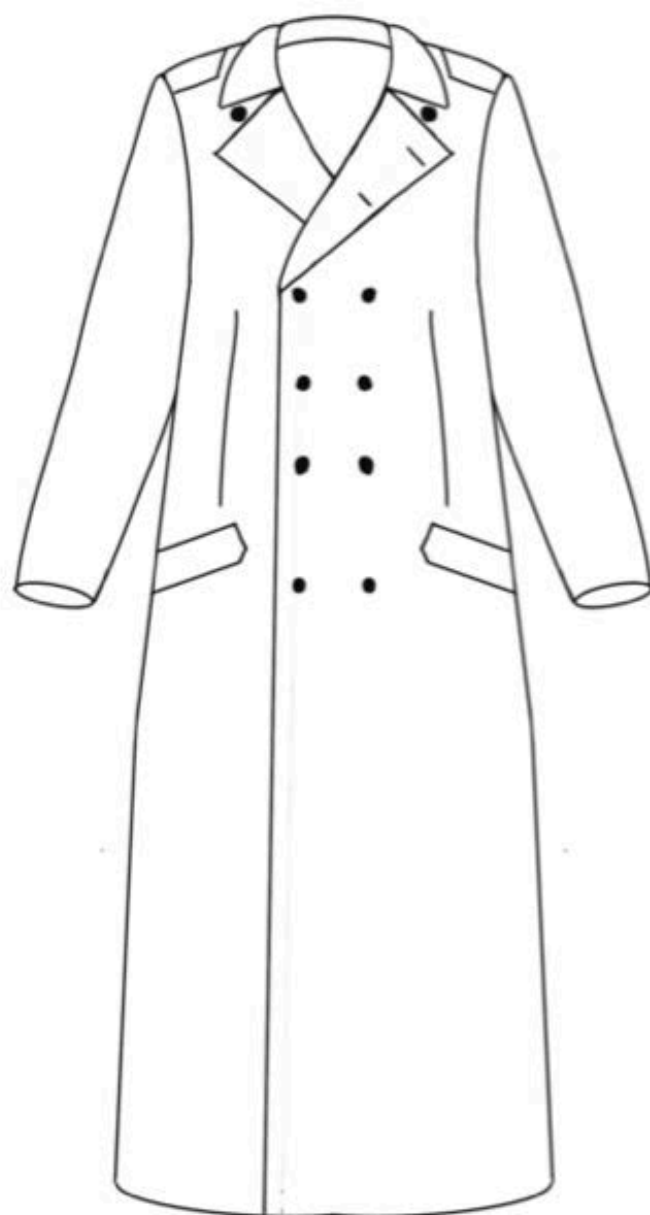


1913











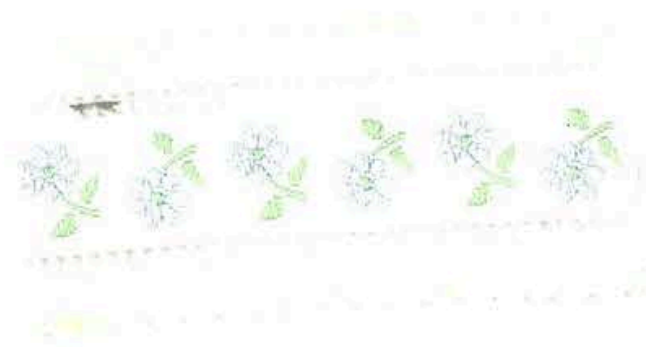
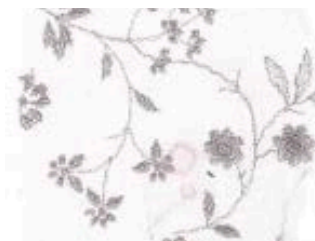
# Harry Blake

Mary Rose's Son



“Private rough fellow, Australian twang”

# 1898 & 1901





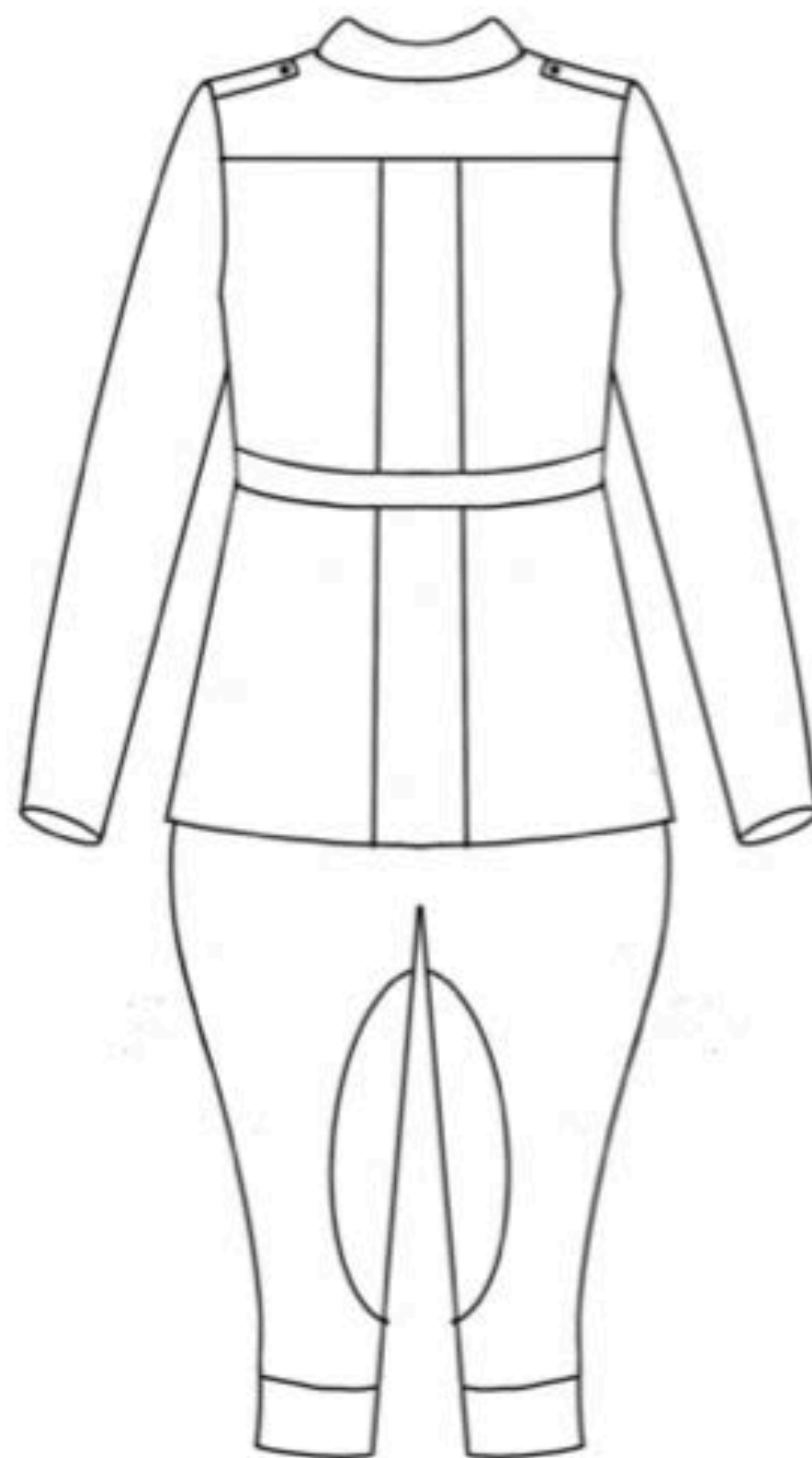
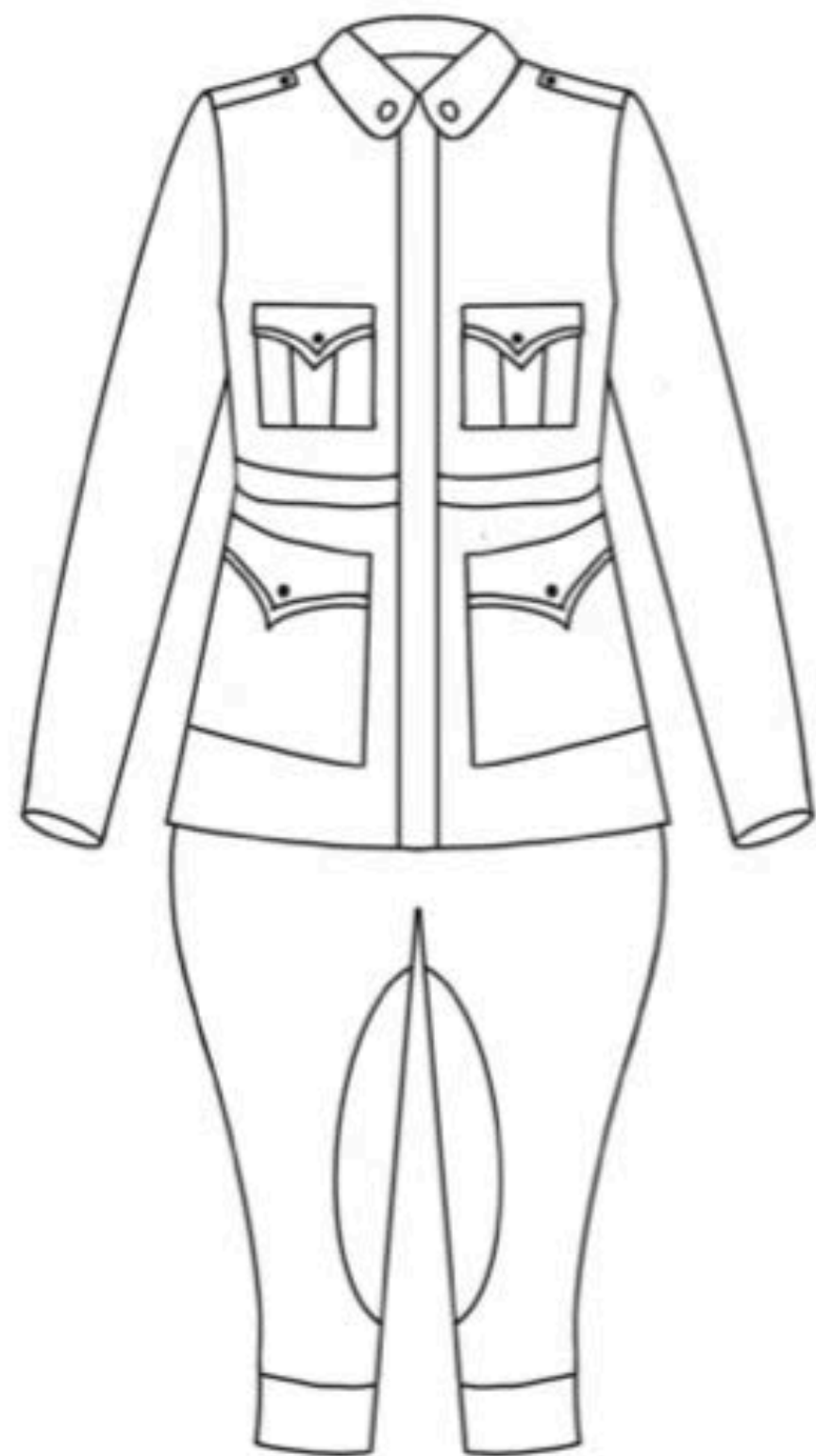
# 1905 & 1907

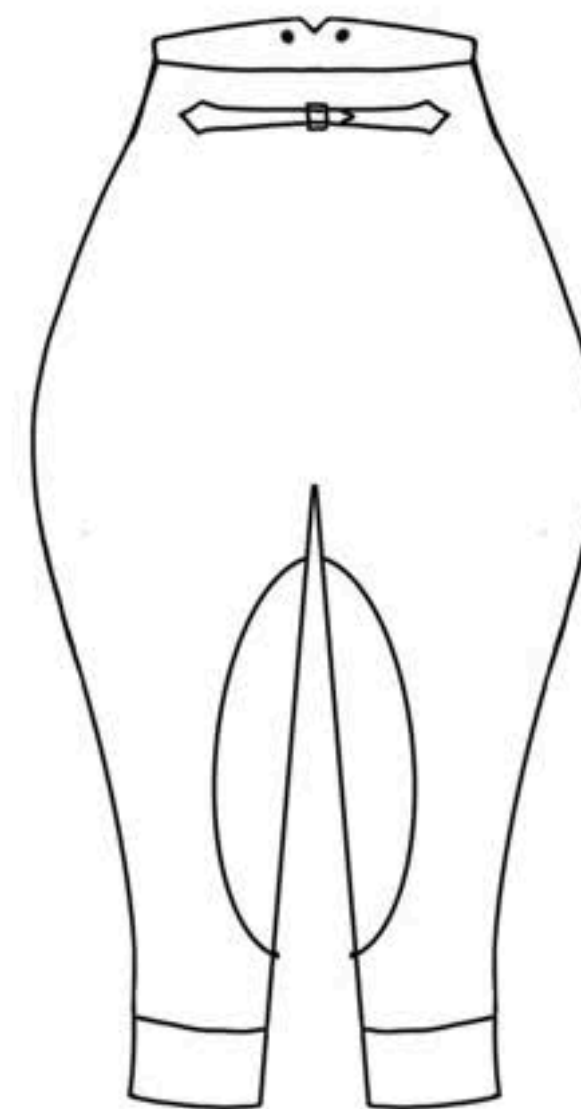
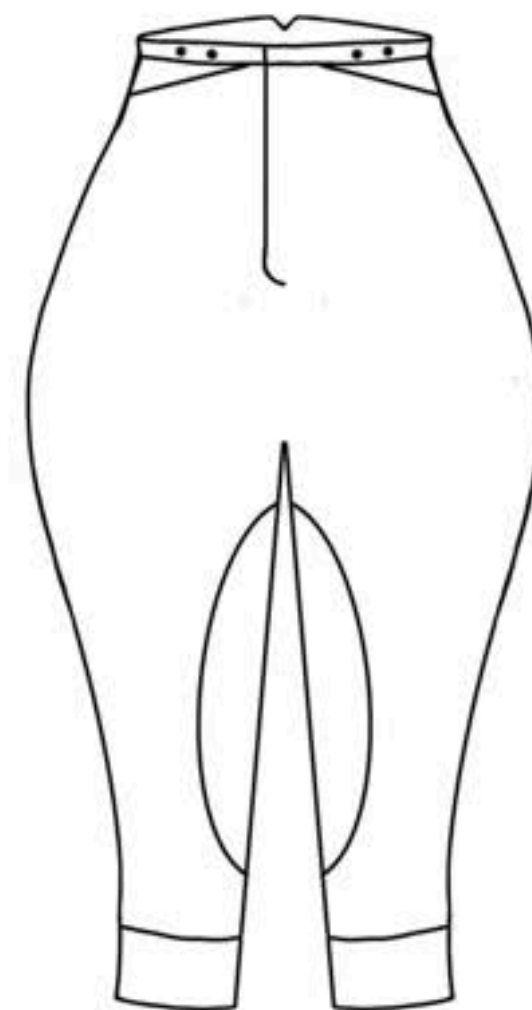
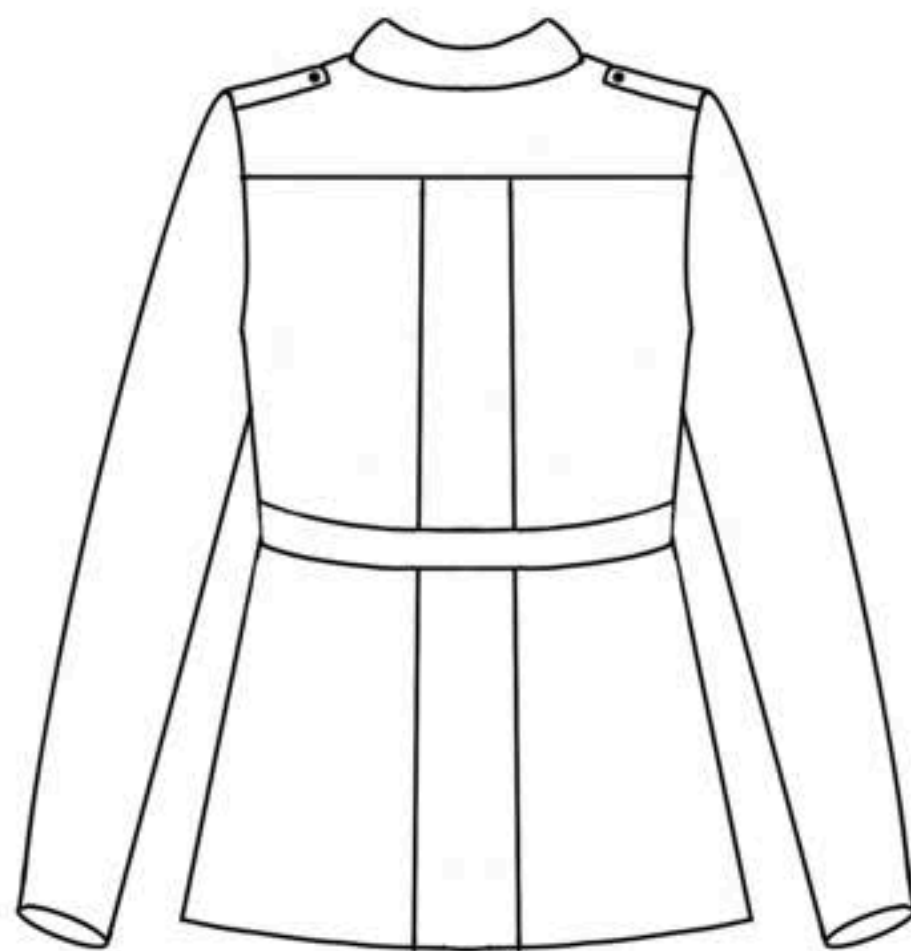


# 1918











# Mr. Morland

Mary Rose's Father



“Lean and peppery squire”

# 1889





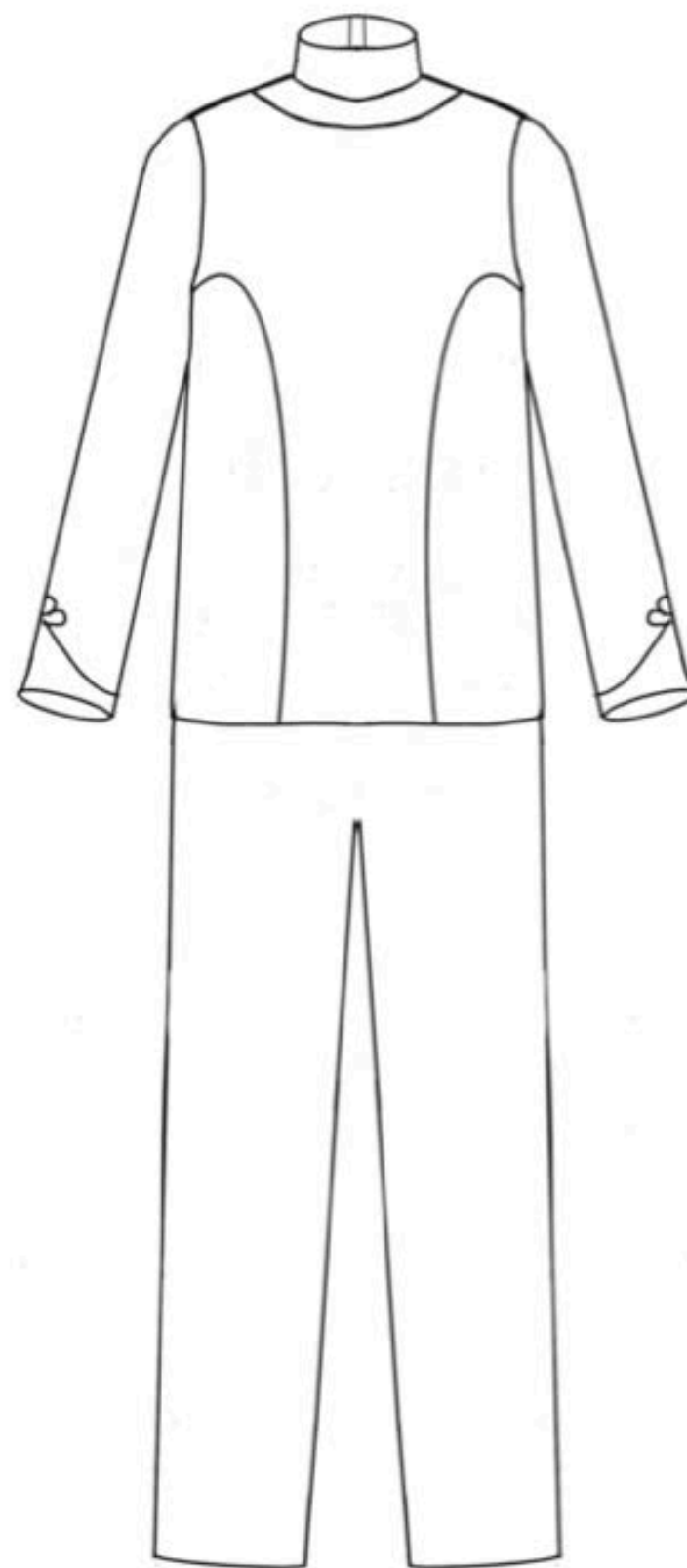
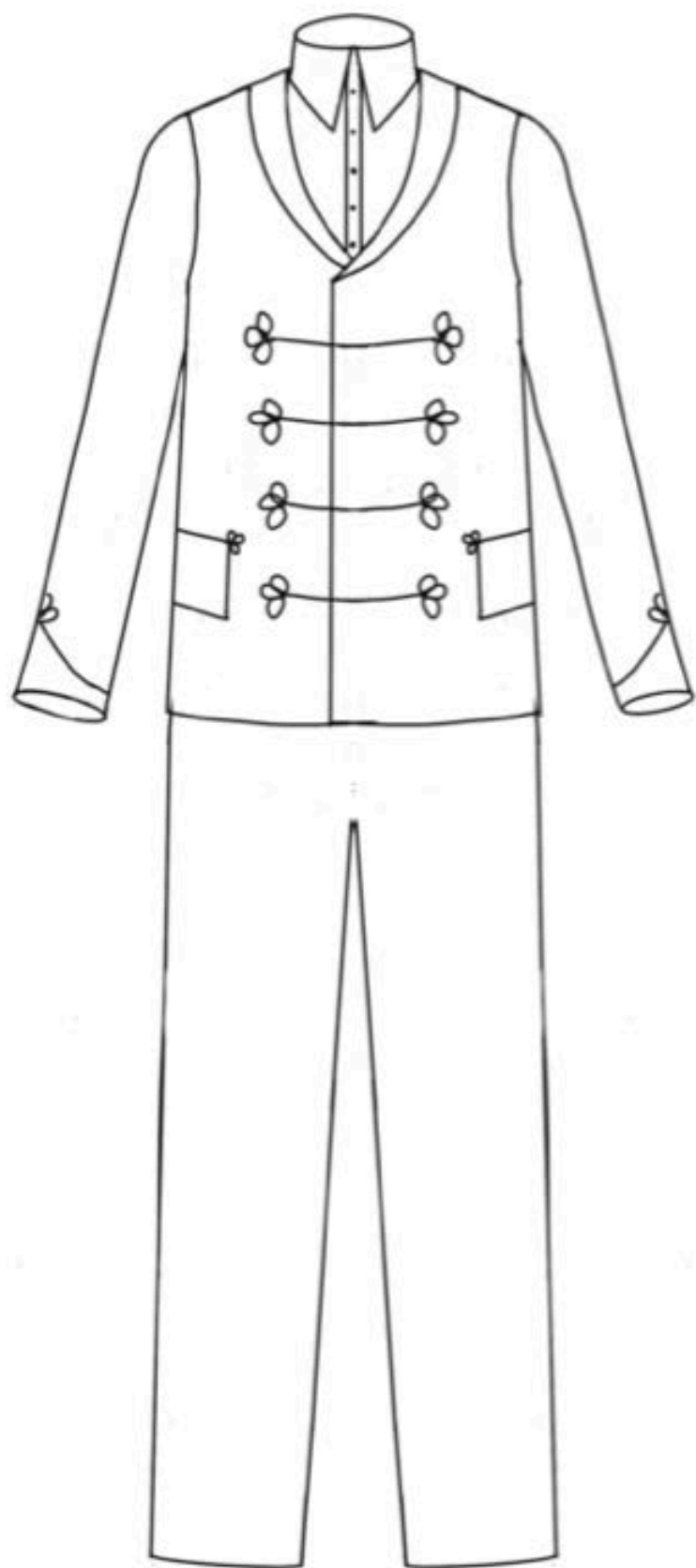
# 1896

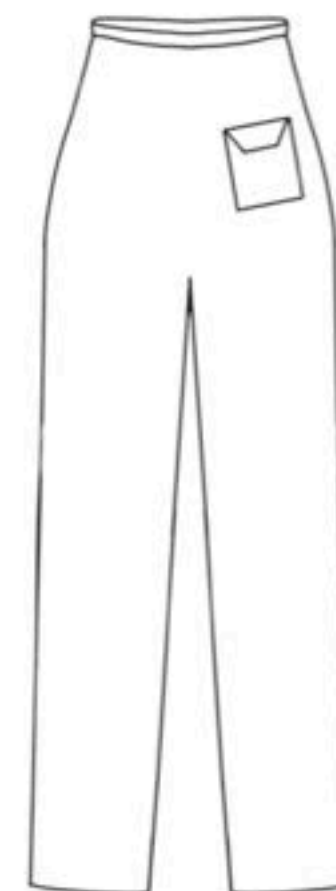
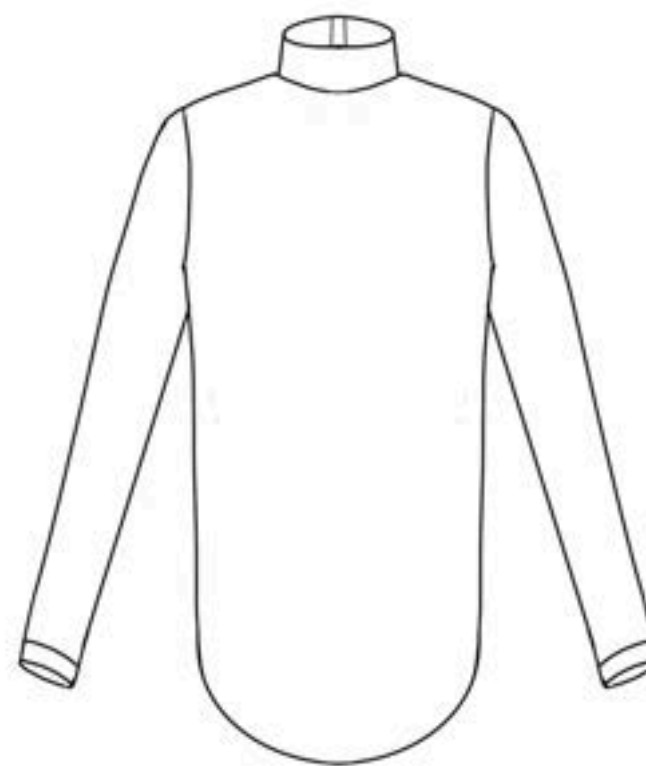
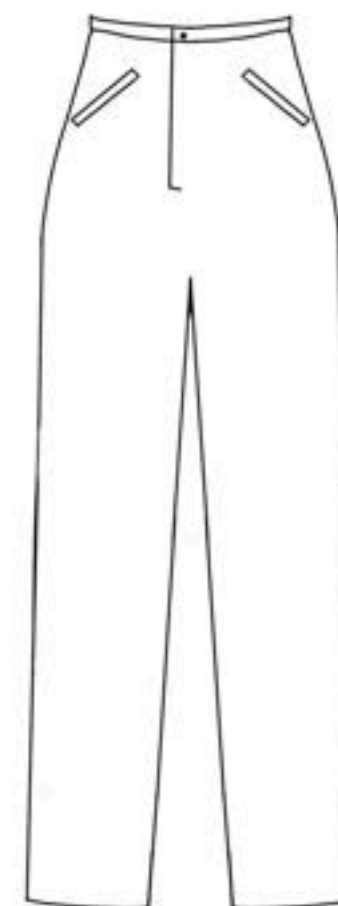
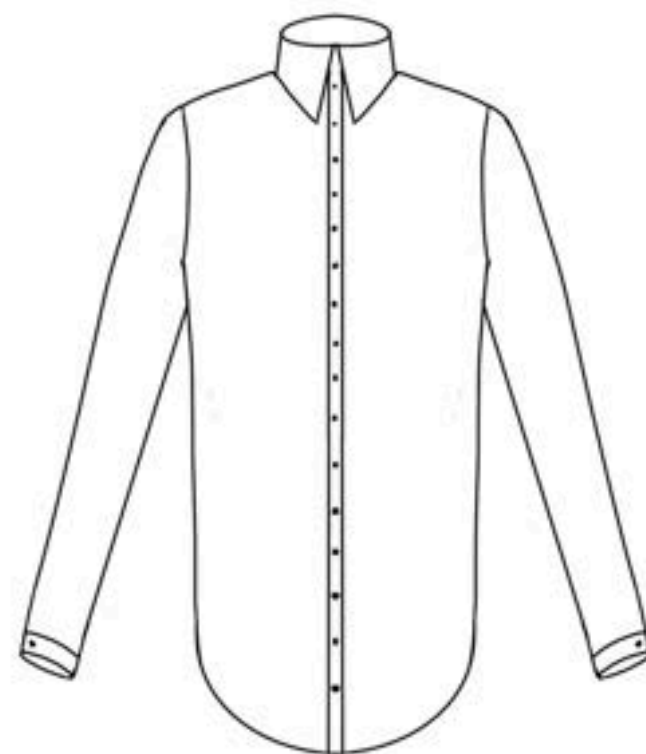


# 1913











# Cameron Ghillie



“Gawky youth,  
student at Aberdeen University (Ministry)”

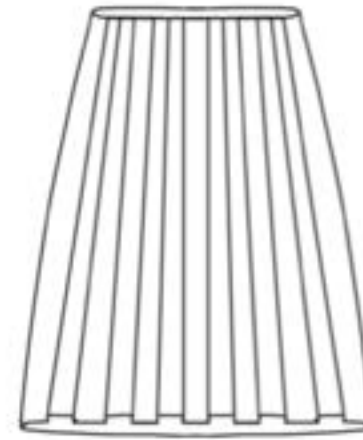
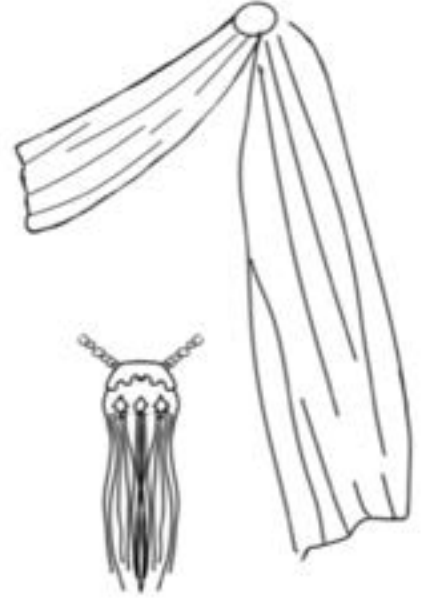


# 1900





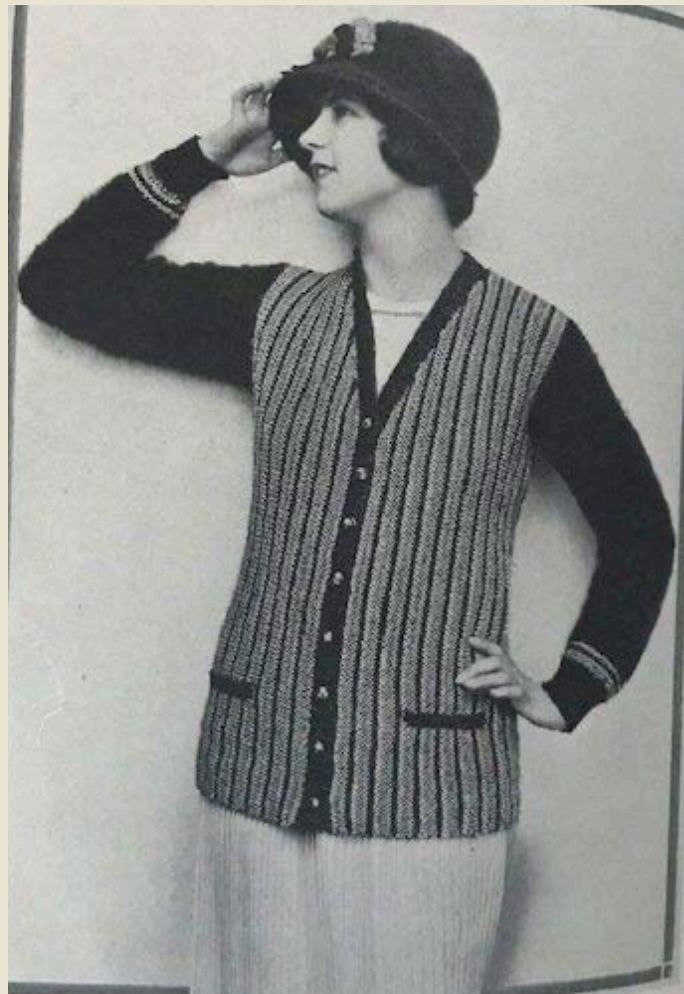






# Mrs. Oterly

## Estate Caretaker



**WASHABLE SKIRTS**  
**60-DAY SALE PRICES**

HAT 15M150 34c  
BAND 15M150 15c

**4M441**  
**4M442**  
**\$1.64**

**4M443**  
**4M444**  
**\$2.98**

**4M445**  
**\$1.49**

**4M447**  
**\$1.19**

**4M446**  
**\$1.09**

**4M440**  
**\$1.19**

**4M441—Booth Cloth**  
This skirt is made of a washable cloth...  
Package at sale, \$1.64

**4M442—Novelty Cord Pique**  
This skirt is made of a washable cord pique...  
Package at sale, \$1.68

**4M443—Confessory**  
This skirt is made of a washable confessory...  
Package at sale, \$2.98

**4M444—For Misses and Small Women**  
This skirt is made of a washable...  
Package at sale, \$2.98

**4M445—White Pique**  
This skirt is made of a washable white pique...  
Package at sale, \$1.49

**4M446—Cotton Rep**  
This skirt is made of a washable cotton rep...  
Package at sale, \$1.09

**4M447—Awning Stripe**  
This skirt is made of a washable awning stripe...  
Package at sale, \$1.19

**4M440—Cotton Gabardine**  
This skirt is made of a washable cotton gabardine...  
Package at sale, \$1.19

Page 76  
National Clock and Suit Company,  
Seventh Ave., 24th and 25th Sts., New York City  
Page 77



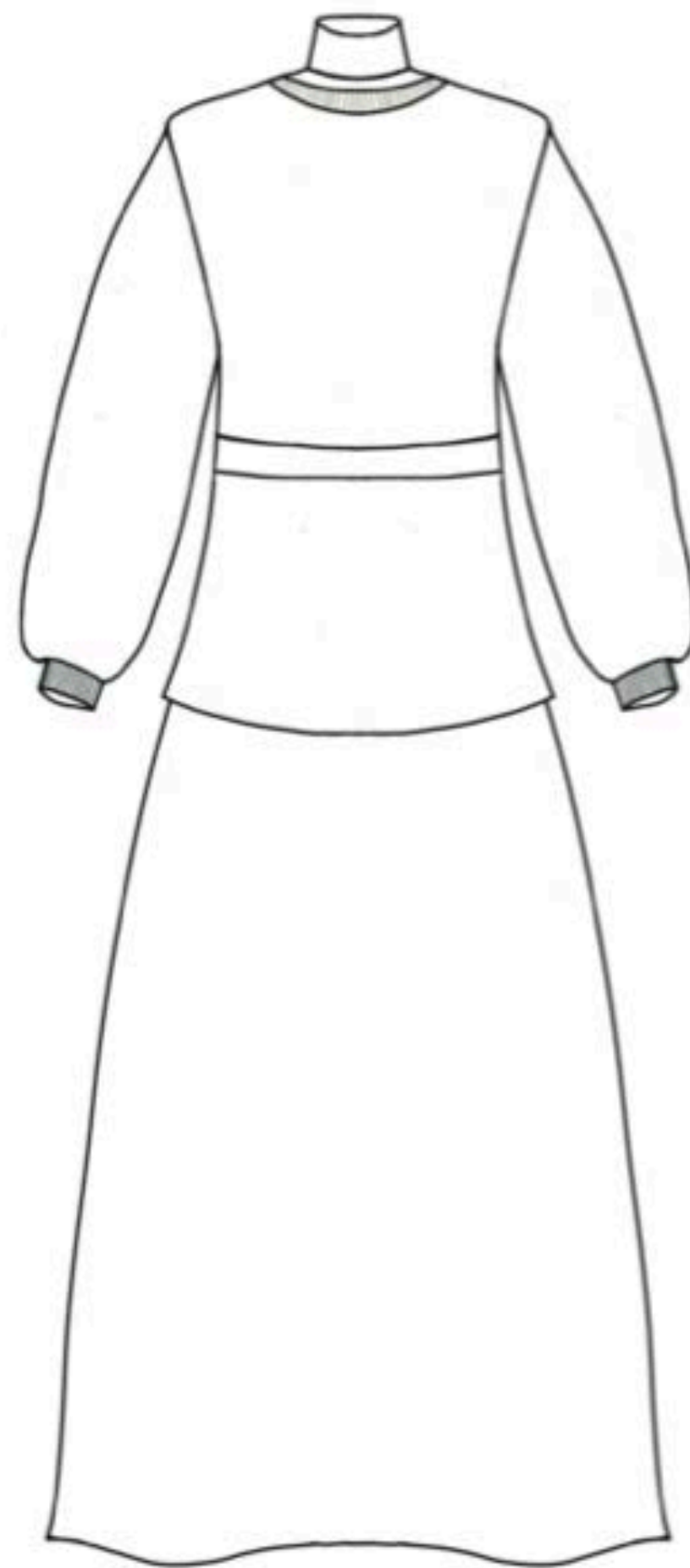
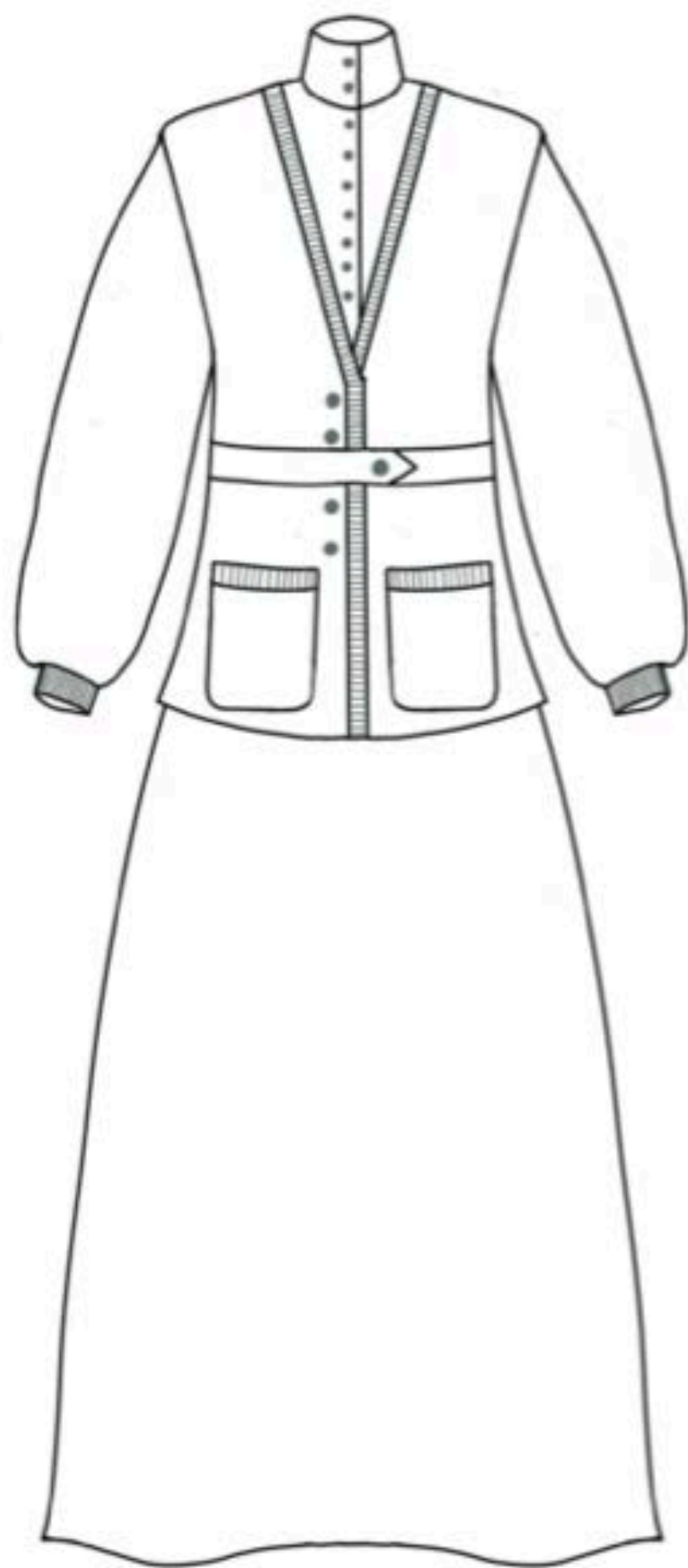
“Elderly woman, indifferent, never laughs, ‘the effort would hurt her face’”

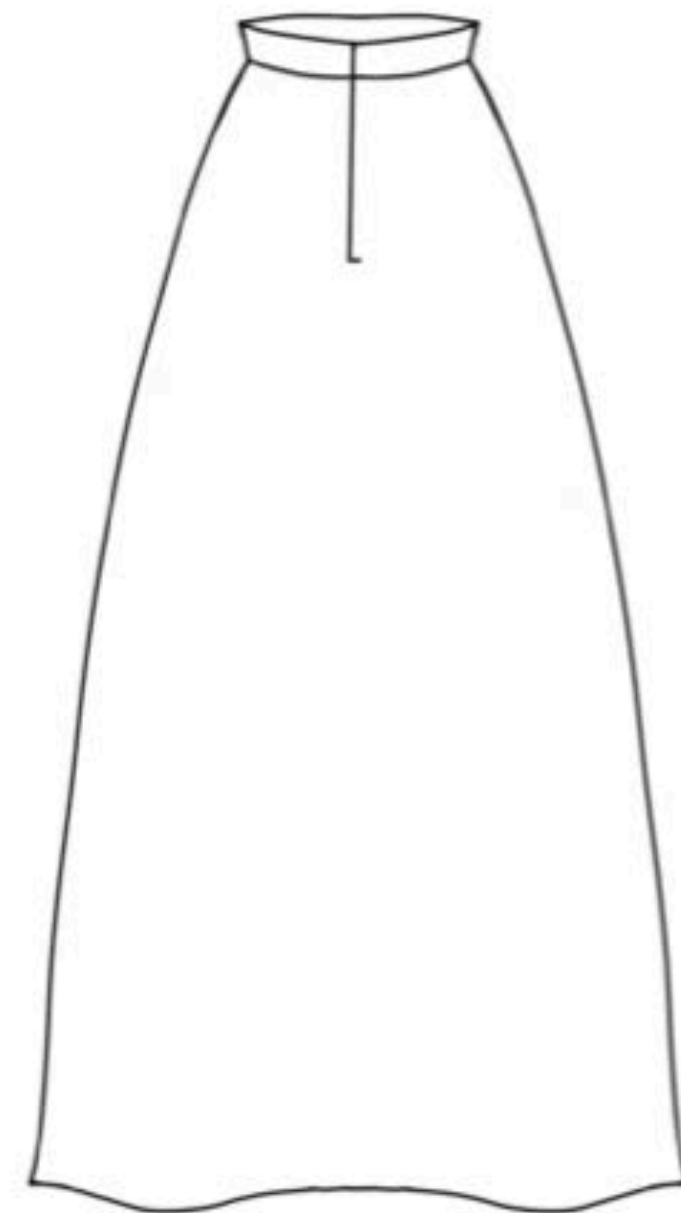
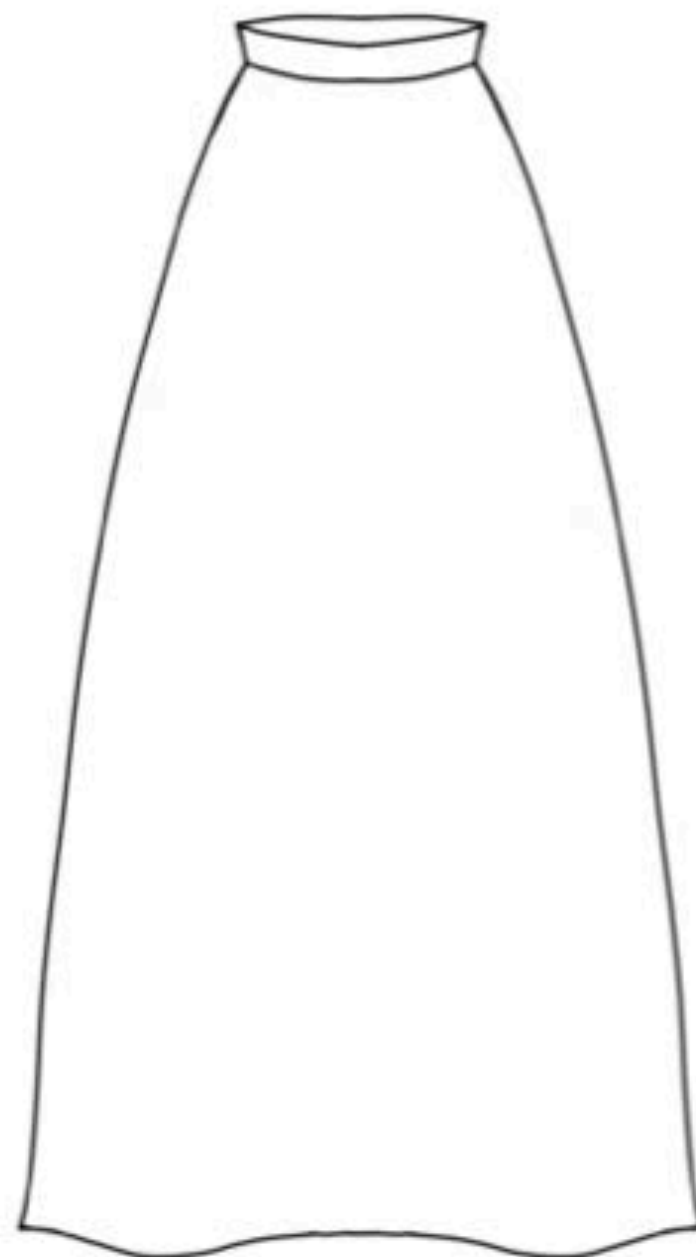


# 1918





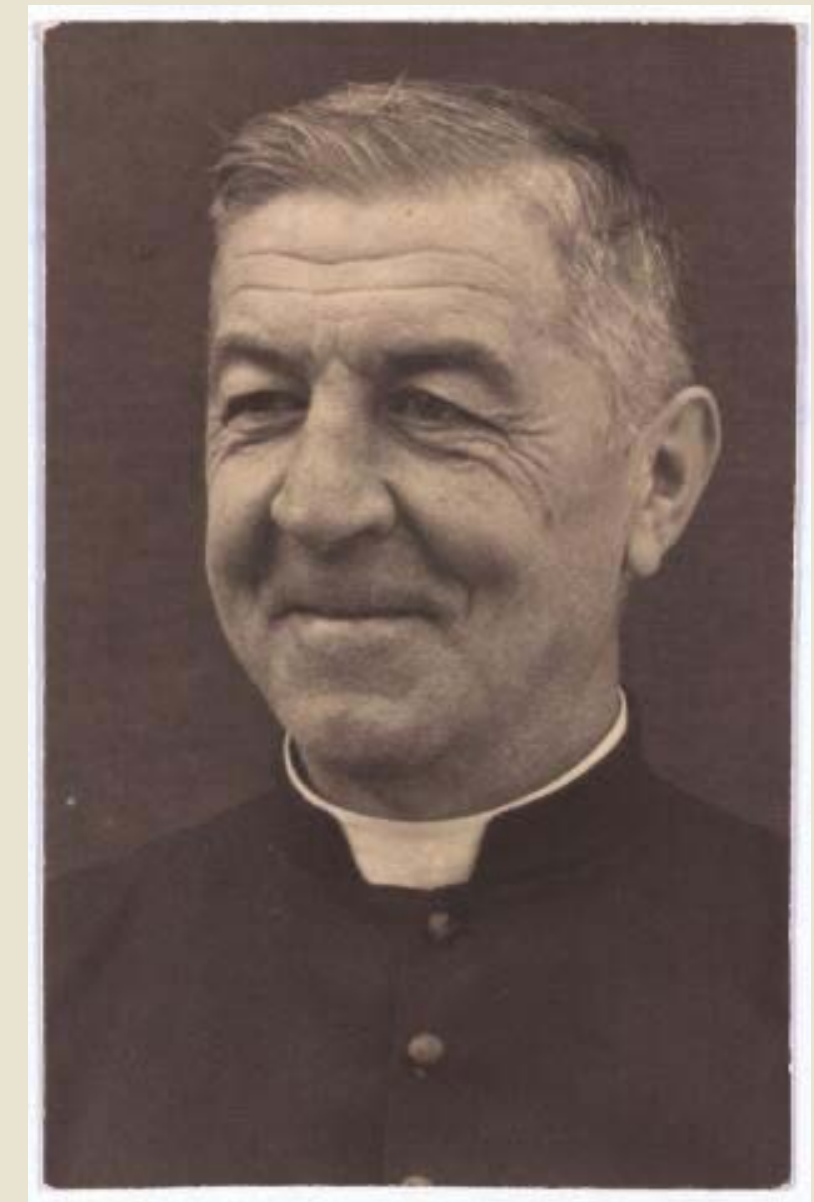






# Mr. Amy

Local Clerk

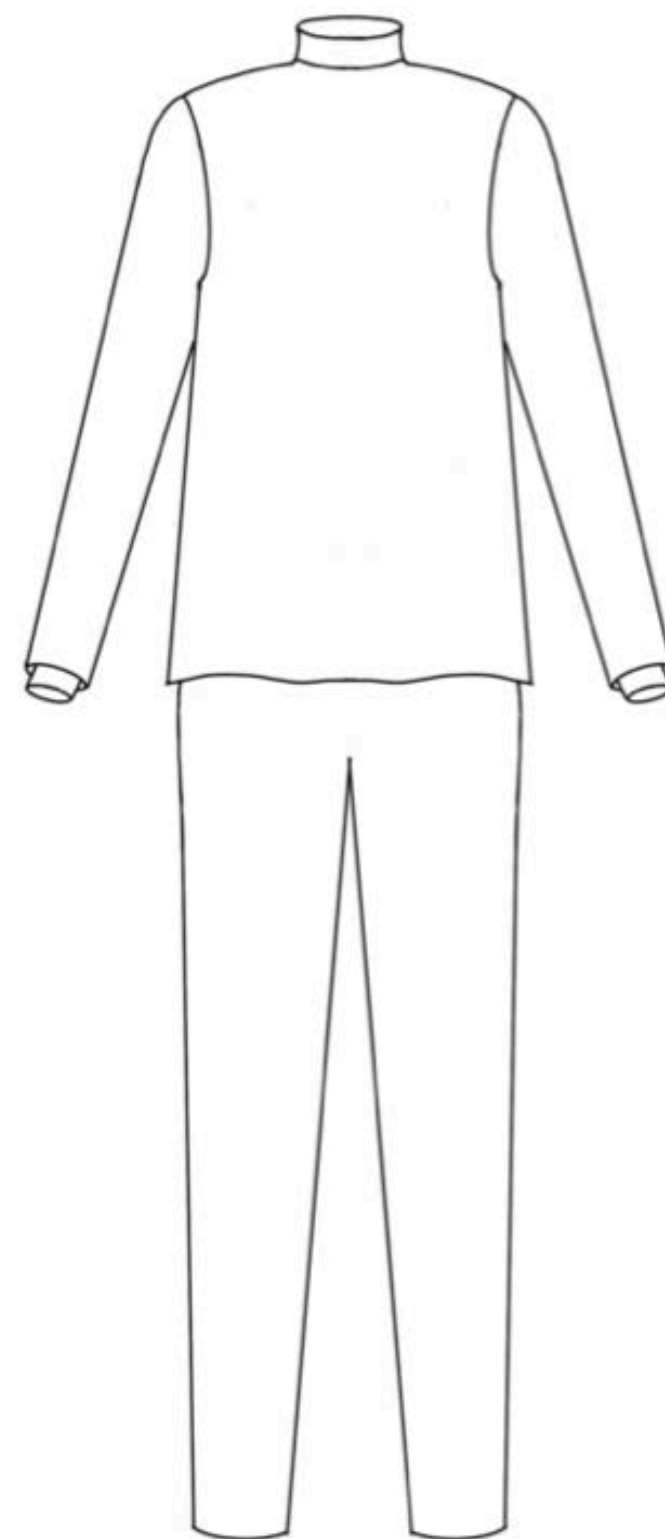
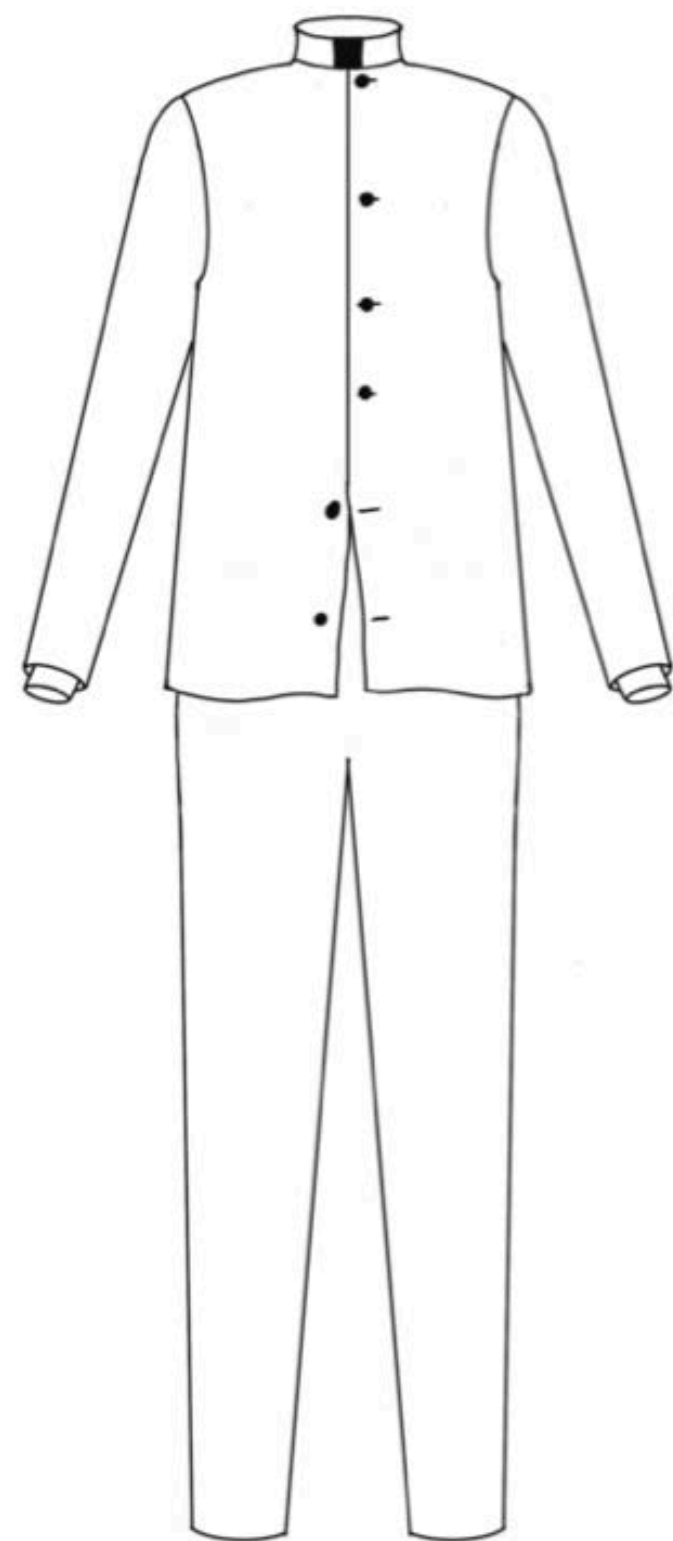


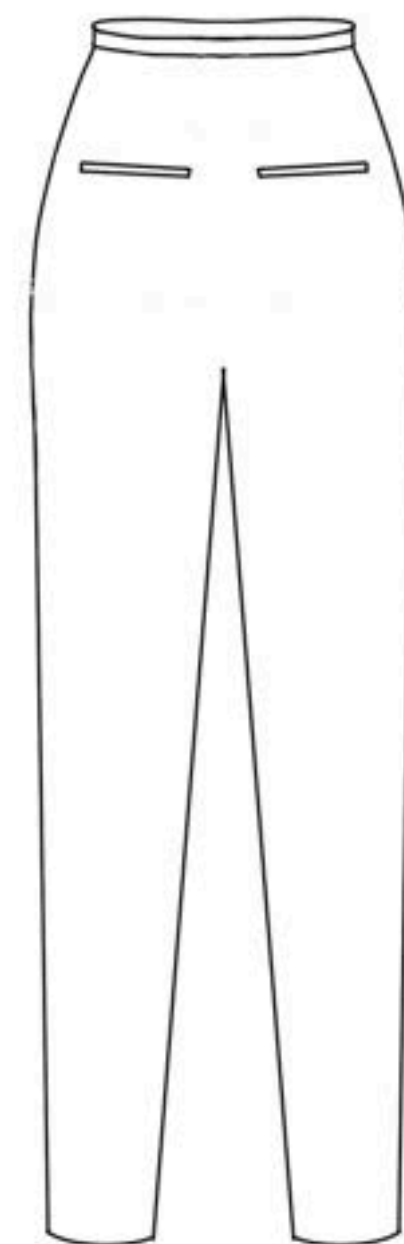
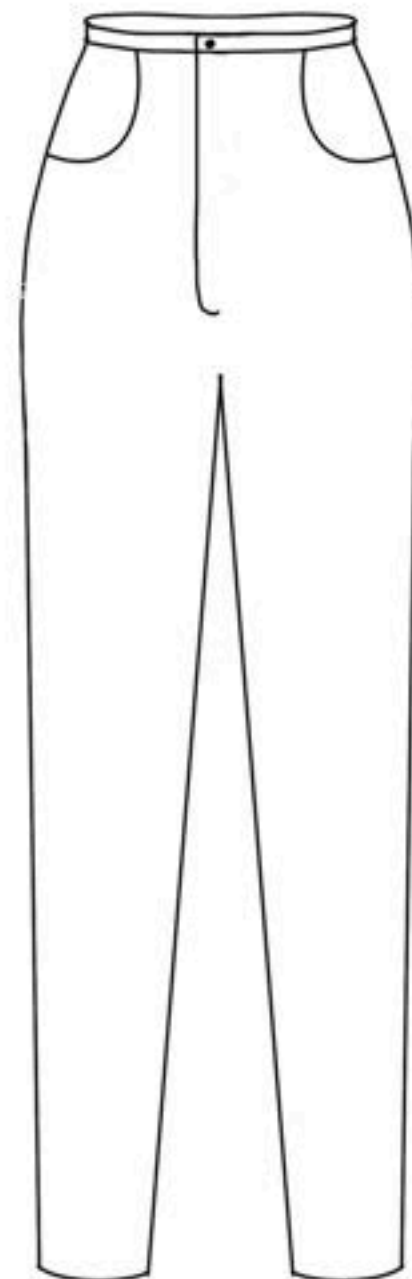
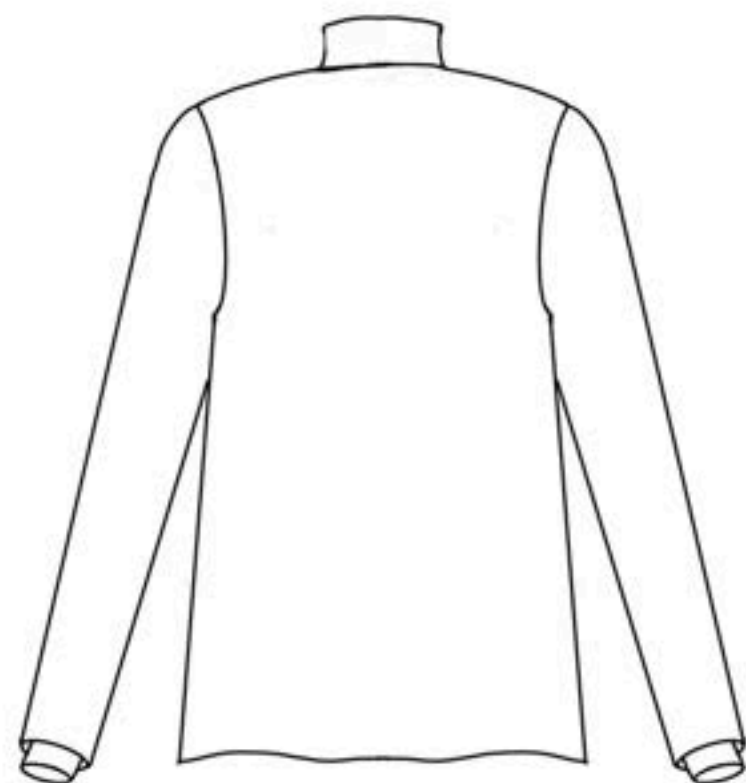
"Sociable, peppery, benignant creature in full habit"

1896







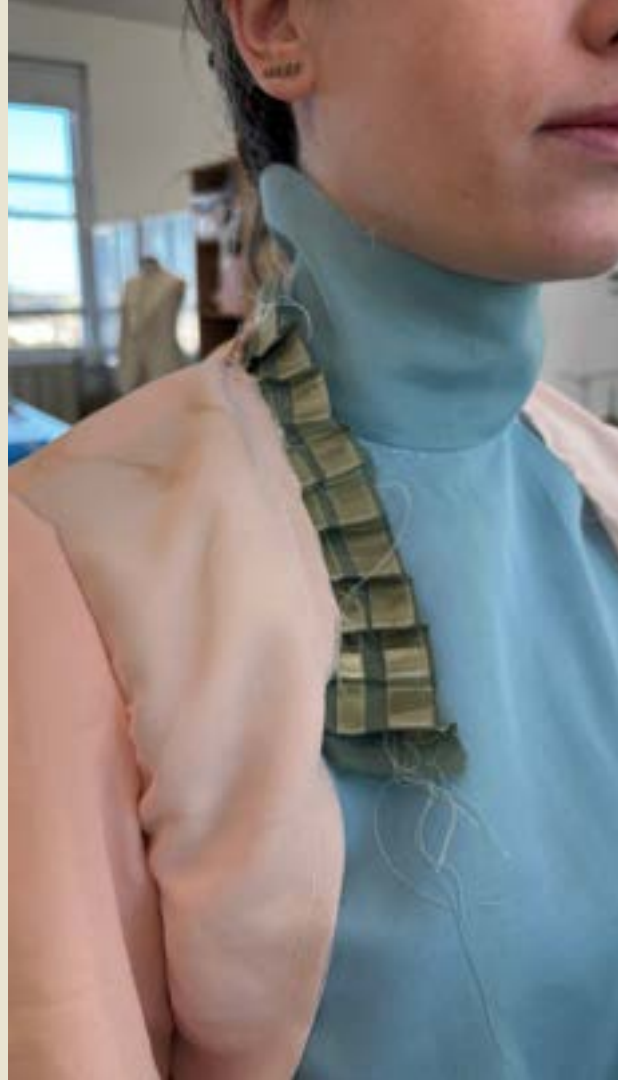




# The Make



# Fittings





# Final Fitting

































# Bibliography

## *Books*

Edwards, L. (2019). HOW TO READ A DRESS : a guide to changing fashion from the 16th to the 20th century. Bloomsbury.

Edwards, L. (2020). How to read a suit : a guide to changing men's fashion from the 17th to the 20th century. London: Bloomsbury Visual Arts.

Nunn, J. (2008). Fashion in costume 1200–2000. Bridgewater, Nj: Distributed By Paw Prints/Baker & Taylor.

Shrimpton, J. (2016). Victorian fashion. Oxford: Shire Publications.

## *Archives*

Australian War Memorial

Rijksmuseum

The John Bright Collection

The MET

Victoria & Albert Museum

## *Royal Navy Uniforms:*

<https://sites.rootsweb.com/~pbtyc/Uniform/Index.html>

## *Research Master List*

<https://pin.it/77EbzL95p>